

For Research Use Only

Mouse Sftpd Recombinant antibody, PBS Only (Detector)

Catalog Number: 85985-2-PBS



Basic Information

Catalog Number: 85985-2-PBS	GenBank Accession Number: NM_009160.2	Purification Method: Protein A purification
Size: 100ug , Concentration: 1 mg/ml by Nanodrop;	GeneID (NCBI): 20390	CloneNo.: 250571B4
Source: Rabbit	UNIPROT ID: P50404	
Isotype: IgG	Full Name: surfactant associated protein D	
Immunogen Catalog Number: EG2924	Calculated MW: 38 kDa	

Applications

Tested Applications:
Sandwich ELISA, Indirect ELISA, Sample test

Species Specificity:
mouse

Product Information

85985-2-PBS targets Sftpd as part of a matched antibody pair:

MP02322-1: 85985-1-PBS capture and 85985-2-PBS detection (validated in Sandwich ELISA)

Unconjugated rabbit recombinant monoclonal antibody in PBS only (BSA and azide free) storage buffer at a concentration of 1 mg/mL, ready for conjugation. Created using Proteintech's proprietary in-house recombinant technology. Recombinant production enables unrivalled batch-to-batch consistency, easy scale-up, and future security of supply.

This conjugation ready format makes antibodies ideal for use in many applications including: ELISAs, multiplex assays requiring matched pairs, mass cytometry, and multiplex imaging applications. Antibody use should be optimized by the end user for each application and assay.

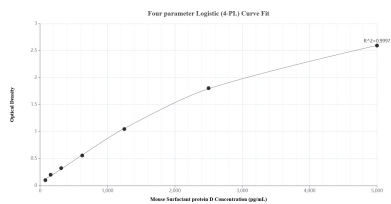
Storage

Storage:
Store at -80°C.
Storage Buffer:
PBS only, pH7.3

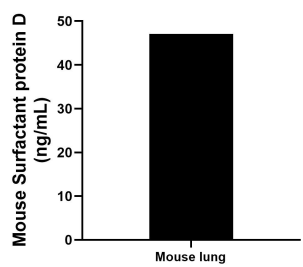
For technical support and original validation data for this product please contact:
T: 1 (888) 4PTGLAB (1-888-478-4522) (toll free in USA), or 1(312) 455-8498 (outside USA)
E: proteintech@ptglab.com
W: ptglab.com

This product is exclusively available under Proteintech Group brand and is not available to purchase from any other manufacturer.

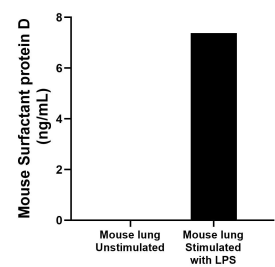
Selected Validation Data



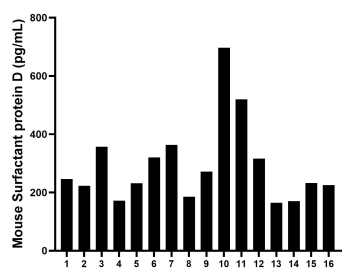
Sandwich ELISA standard curve of MP02322-1, Mouse Surfactant protein D Recombinant Matched Antibody Pair - PBS only. 85985-1-PBS was coated to a plate as the capture antibody and incubated with serial dilutions of standard Eg2924. 85985-2-PBS was HRP conjugated as the detection antibody. Range: 78.1-5000 pg/mL



The mean Surfactant protein D concentration was determined to be 47.1 ng/mL in mouse lung tissue extract based on a 5.3 mg/mL extract load.



Mouse lung, cut into 1-2 mm pieces, was cultured unstimulated or stimulated with 1 µg/mL LPS for 3 days. The mean Surfactant protein D concentration was undetectable in unstimulated supernatant, 7.4 ng/mL in LPS stimulated supernatant.



Serum of sixteen mice was measured. The Surfactant protein D concentration of detected samples was determined to be 293.4 pg/mL with a range of 164.4-696.5 pg/mL