

For Research Use Only

RAB22A Recombinant antibody, PBS Only

Catalog Number: 85986-2-PBS



Basic Information

Catalog Number: 85986-2-PBS	GenBank Accession Number: BC015710	Purification Method: Protein A purification
Size: 100ug , Concentration: 1 mg/ml by Nanodrop;	GeneID (NCBI): 57403	CloneNo.: 250387G2
Source: Rabbit	UNIPROT ID: Q9UL26	
Isotype: IgG	Full Name: RAB22A, member RAS oncogene family	
Immunogen Catalog Number: AG2769	Calculated MW: 194 aa, 22 kDa	
	Observed MW: 22 kDa	

Applications

Tested Applications:
WB, Indirect ELISA

Species Specificity:
human

Background Information

RAB22A is a small GTPase that is expressed ubiquitously in mammalian tissues. It localizes in the MHCI-containing recycling endosomal tubules and functions in endocytic pathway. RAB22A may regulate the dynamic interactions of endosomal compartments and it may be involved in the communication between the biosynthetic and early endocytic pathways. It shares 81% identity with RAB31.

Storage

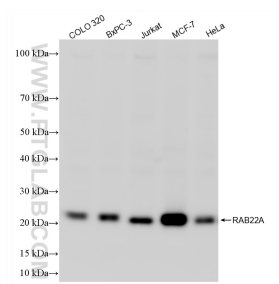
Storage:
Store at -80°C.

Storage Buffer:
PBS only, pH7.3

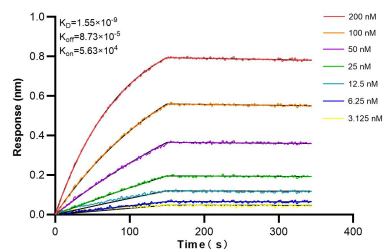
For technical support and original validation data for this product please contact:
T: 1 (888) 4PTGLAB (1-888-478-4522) (toll free in USA), or 1(312) 455-8498 (outside USA)
E: proteintech@ptglab.com
W: ptglab.com

This product is exclusively available under Proteintech Group brand and is not available to purchase from any other manufacturer.

Selected Validation Data



Various lysates were subjected to SDS PAGE followed by western blot with 85986-2-RR (RAB22A antibody) at dilution of 1:1000 incubated at room temperature for 1.5 hours. This data was developed using the same antibody clone with 85986-2-PBS in a different storage buffer formulation.



Biolayer interferometry (BLI) kinetic assays of 85986-2-RR against Human RAB22A were performed. The affinity constant is 1.55 nM.