

For Research Use Only

# ISG20L2 Recombinant antibody, PBS Only

Catalog Number: 85992-2-PBS



## Basic Information

### Catalog Number:

85992-2-PBS

### Size:

100ug, Concentration: 1 mg/ml by Nanodrop;

### Source:

Rabbit

### Isotype:

IgG

### Immunogen Catalog Number:

AG20026

### GenBank Accession Number:

BC000575

### GeneID (NCBI):

81875

### UNIPROT ID:

Q9H9L3

### Full Name:

interferon stimulated exonuclease gene 20kDa-like 2

### Calculated MW:

353 aa, 39 kDa

### Observed MW:

39 kDa

### Purification Method:

Protein A purification

### CloneNo.:

250419F5

## Applications

### Tested Applications:

WB, Indirect ELISA

### Species Specificity:

human

## Background Information

ISG20L2, also named HSD38, is a member of a vertebrate exonucleases family. ISG20L2 is composed of at least two functional domains, one at its N-terminal half allowing intracellular localization and association with the binding partners and the other at its C-terminal half bearing the 3' to 5' exonuclease activity. The molecular weight of ISG20L2 is 39 kDa (PMID: 18065403).

## Storage

### Storage:

Store at -80°C.

### Storage Buffer:

PBS only, pH7.3

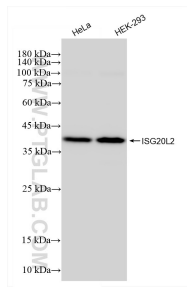
For technical support and original validation data for this product please contact:

T: 1 (888) 4PTGLAB (1-888-478-4522) (toll free in USA), or 1(312) 455-8498 (outside USA)

E: [proteintech@ptglab.com](mailto:proteintech@ptglab.com)  
W: [ptglab.com](http://ptglab.com)

This product is exclusively available under Proteintech Group brand and is not available to purchase from any other manufacturer.

## Selected Validation Data



Various lysates were subjected to SDS PAGE followed by western blot with 85992-2-RR (ISG20L2 antibody) at dilution of 1:5000 incubated at room temperature for 1.5 hours. This data was developed using the same antibody clone with 85992-2-PBS in a different storage buffer formulation.