

For Research Use Only

ISG20L2 Recombinant antibody

Catalog Number: 85992-2-RR



Basic Information

Catalog Number: 85992-2-RR	GenBank Accession Number: BC000575	Purification Method: Protein A purification
Size: 100ul , Concentration: 1000 µg/ml by Nanodrop;	GeneID (NCBI): 81875	CloneNo.: 250419F5
Source: Rabbit	UNIPROT ID: Q9H9L3	Recommended Dilutions: WB: 1:2000-1:10000
Isotype: IgG	Full Name: interferon stimulated exonuclease gene 20kDa-like 2	
Immunogen Catalog Number: AG20026	Calculated MW: 353 aa, 39 kDa	
	Observed MW: 39 kDa	

Applications

Tested Applications: WB, ELISA	Positive Controls: WB : HeLa cells, HEK-293 cells
Species Specificity: human	

Background Information

ISG20L2, also named HSD38, is a member of a vertebrate exonucleases family. ISG20L2 is composed of at least two functional domains, one at its N-terminal half allowing intracellular localization and association with the binding partners and the other at its C-terminal half bearing the 3' to 5' exoribonuclease activity. The molecular weight of ISG20L2 is 39 kDa (PMID: 18065403).

Storage

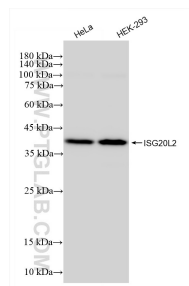
Storage:
Store at -20°C. Stable for one year after shipment.
Storage Buffer:
PBS with 0.02% sodium azide and 50% glycerol, pH7.3
Aliquoting is unnecessary for -20°C storage

*** 20ul sizes contain 0.1% BSA

For technical support and original validation data for this product please contact:
T: 1 (888) 4PTGLAB (1-888-478-4522) (toll free in USA), or 1(312) 455-8498 (outside USA)
E: proteintech@ptglab.com
W: ptglab.com

This product is exclusively available under Proteintech Group brand and is not available to purchase from any other manufacturer.

Selected Validation Data



Various lysates were subjected to SDS PAGE followed by western blot with 85992-2-RR (ISG20L2 antibody) at dilution of 1:5000 incubated at room temperature for 1.5 hours.