

For Research Use Only

S100A7 Recombinant antibody, PBS Only (Detector)

Catalog Number: 85993-2-PBS



Basic Information

Catalog Number: 85993-2-PBS	GenBank Accession Number: BC034687	Purification Method: Protein A purification
Size: 100ug , Concentration: 1 mg/ml by Nanodrop;	GeneID (NCBI): 6278	CloneNo.: 250425G11
Source: Rabbit	UNIPROT ID: P31151	
Isotype: IgG	Full Name: S100 calcium binding protein A7	
Immunogen Catalog Number: AG3738	Calculated MW: 101 aa, 11 kDa	

Applications

Tested Applications:
Cytometric bead array, Indirect ELISA, Sample test

Species Specificity:
human

Product Information

85993-2-PBS targets S100A7 as part of a matched antibody pair:

MP02225-1: 85993-3-PBS capture and 85993-2-PBS detection (validated in Cytometric bead array)

Unconjugated rabbit recombinant monoclonal antibody in PBS only (BSA and azide free) storage buffer at a concentration of 1 mg/mL, ready for conjugation. Created using Proteintech's proprietary in-house recombinant technology. Recombinant production enables unrivalled batch-to-batch consistency, easy scale-up, and future security of supply.

This conjugation ready format makes antibodies ideal for use in many applications including: ELISAs, multiplex assays requiring matched pairs, mass cytometry, and multiplex imaging applications. Antibody use should be optimized by the end user for each application and assay.

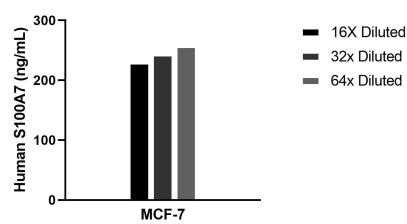
Storage

Storage:
Store at -80°C.
Storage Buffer:
PBS only, pH7.3

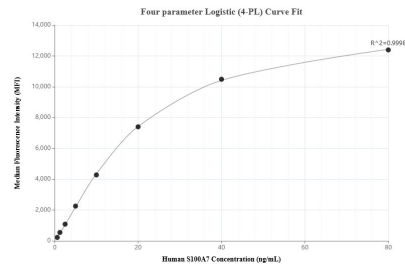
For technical support and original validation data for this product please contact:
T: 1 (888) 4PTGLAB (1-888-478-4522) (toll free in USA), or 1(312) 455-8498 (outside USA)
E: proteintech@ptglab.com
W: ptglab.com

This product is exclusively available under Proteintech Group brand and is not available to purchase from any other manufacturer.

Selected Validation Data



The mean S100A7 concentration was determined to be 242.9 ng/mL in MCF-7 cell extract based on a 1.2 mg/mL extract load.



Cytometric bead array standard curve of MP02225-1, S100A7 Recombinant Matched Antibody Pair, PBS Only. Capture antibody: 85993-3-PBS. Detection antibody: 85993-2-PBS. Standard: Ag3738. Range: 0.625-80 ng/mL.