

For Research Use Only

# CFP Recombinant antibody

Catalog Number: 85999-1-RR



## Basic Information

<b>Catalog Number:</b> 85999-1-RR	<b>GenBank Accession Number:</b> BC015756	<b>Purification Method:</b> Protein A purification
<b>Size:</b> 100ul , Concentration: 1000 µg/ml by Nanodrop;	<b>GeneID (NCBI):</b> 5199	<b>CloneNo.:</b> 250654E3
<b>Source:</b> Rabbit	<b>UNIPROT ID:</b> P27918	<b>Recommended Dilutions:</b> WB: 1:1000-1:6000
<b>Isotype:</b> IgG	<b>Full Name:</b> complement factor properdin	
<b>Immunogen Catalog Number:</b> EG2219	<b>Calculated MW:</b> 469 aa, 51 kDa	
	<b>Observed MW:</b> 55 kDa	

## Applications

<b>Tested Applications:</b> WB, ELISA	<b>Positive Controls:</b> WB : rat plasma, human plasma, mouse serum tissue
<b>Species Specificity:</b> human, mouse, rat	

## Background Information

CFP, also named as Properdin or PFC, is a 469 amino acid protein, which contains 7 TSP type-1 domains. CFP as secreted protein is a positive regulator of the alternate pathway of complement. It binds to and stabilizes the C3- and C5-convertase enzyme complexes. Properdin deficiency poses a significant risk for severe meningococcal infections (PMID: 22229731). Properdin may be novel biomarker for future risk of type 2 diabetes (PMID: 22338105).

## Storage

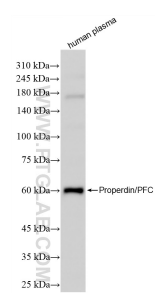
**Storage:**  
Store at -20°C. Stable for one year after shipment.  
**Storage Buffer:**  
PBS with 0.02% sodium azide and 50% glycerol, pH7.3  
**Aliquoting is unnecessary for -20°C storage**

\*\*\* 20ul sizes contain 0.1% BSA

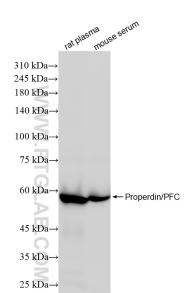
For technical support and original validation data for this product please contact:  
T: 1 (888) 4PTGLAB (1-888-478-4522) (toll free in USA), or 1(312) 455-8498 (outside USA)  
E: proteintech@ptglab.com  
W: ptglab.com

This product is exclusively available under Proteintech Group brand and is not available to purchase from any other manufacturer.

## Selected Validation Data



human plasma were subjected to SDS PAGE followed by western blot with 85999-1-RR (CFP antibody) at dilution of 1:3000 incubated at room temperature for 1.5 hours.



Various lysates were subjected to SDS PAGE followed by western blot with 85999-1-RR (CFP antibody) at dilution of 1:3000 incubated at room temperature for 1.5 hours.