

For Research Use Only

INPP5A Recombinant antibody, PBS Only (Detector)

Catalog Number: 86001-2-PBS



Basic Information

Catalog Number: 86001-2-PBS	GenBank Accession Number: BC096280	Purification Method: Protein A purification
Size: 100ug , Concentration: 1 mg/ml by Nanodrop;	GeneID (NCBI): 3632	CloneNo.: 250584C2
Source: Rabbit	UNIPROT ID: Q14642	
Isotype: IgG	Full Name: inositol polyphosphate-5-phosphatase, 40kDa	
Immunogen Catalog Number: AG16380	Calculated MW: 412 aa, 48 kDa	

Applications

Tested Applications:
Sandwich ELISA, Indirect ELISA, Sample test

Species Specificity:
human

Product Information

86001-2-PBS targets INPP5A as part of a matched antibody pair:

MP02318-1: 86001-3-PBS capture and 86001-2-PBS detection (validated in Sandwich ELISA)

Unconjugated rabbit recombinant monoclonal antibody in PBS only (BSA and azide free) storage buffer at a concentration of 1 mg/mL, ready for conjugation. Created using Proteintech's proprietary in-house recombinant technology. Recombinant production enables unrivalled batch-to-batch consistency, easy scale-up, and future security of supply.

This conjugation ready format makes antibodies ideal for use in many applications including: ELISAs, multiplex assays requiring matched pairs, mass cytometry, and multiplex imaging applications. Antibody use should be optimized by the end user for each application and assay.

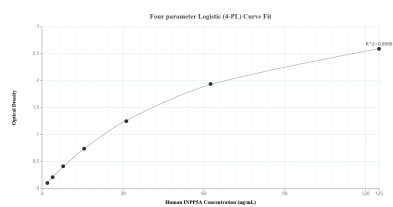
Storage

Storage:
Store at -80°C.
Storage Buffer:
PBS only, pH7.3

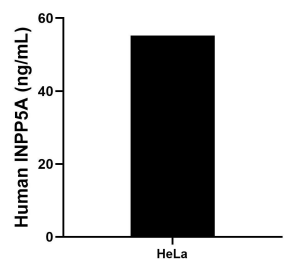
For technical support and original validation data for this product please contact:
T: 1 (888) 4PTGLAB (1-888-478-4522) (toll free in USA), or 1(312) 455-8498 (outside USA)
E: proteintech@ptglab.com
W: ptglab.com

This product is exclusively available under Proteintech Group brand and is not available to purchase from any other manufacturer.

Selected Validation Data



Sandwich ELISA standard curve of MP02318-1, Human INPP5A Recombinant Matched Antibody Pair - PBS only. 86001-3-PBS was coated to a plate as the capture antibody and incubated with serial dilutions of standard Ag16380. 86001-2-PBS was HRP conjugated as the detection antibody. Range: 1.95-125 ng/mL.



The mean INPP5A concentration was determined to be 55.23 ng/mL in HeLa cell extract based on a 1.30 mg/mL extract load.