

For Research Use Only

Mouse Ccl9 Recombinant antibody, PBS Only (Capture)

Catalog Number: 86002-2-PBS



Basic Information

Catalog Number: 86002-2-PBS	GenBank Accession Number: NM_011338.2	Purification Method: Protein A purification
Size: 100ug , Concentration: 1 mg/ml by Nanodrop;	GeneID (NCBI): 20308	CloneNo.: 243103H5
Source: Rabbit	UNIPROT ID: Q3U9T8	
Isotype: IgG	Full Name: chemokine (C-C motif) ligand 9	
Immunogen Catalog Number: EG3336	Calculated MW: 14KD	

Applications

Tested Applications:
Cytometric bead array, Indirect ELISA, Sample test

Species Specificity:
mouse

Product Information

86002-2-PBS targets Ccl9 as part of a matched antibody pair.

MP02230-1: 86002-2-PBS capture and 86002-1-PBS detection (validated in Cytometric bead array)

Unconjugated rabbit recombinant monoclonal antibody in PBS only (BSA and azide free) storage buffer at a concentration of 1 mg/mL, ready for conjugation. Created using Proteintech's proprietary in-house recombinant technology. Recombinant production enables unrivalled batch-to-batch consistency, easy scale-up, and future security of supply.

This conjugation ready format makes antibodies ideal for use in many applications including: ELISAs, multiplex assays requiring matched pairs, mass cytometry, and multiplex imaging applications. Antibody use should be optimized by the end user for each application and assay.

Storage

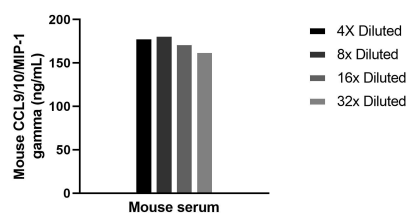
Storage:
Store at -80°C.

Storage Buffer:
PBS only, pH7.3

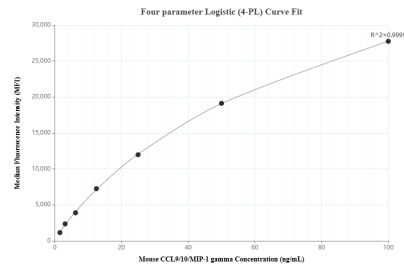
For technical support and original validation data for this product please contact:
T: 1 (888) 4PTGLAB (1-888-478-4522) (toll free in USA), or 1(312) 455-8498 (outside USA)
E: proteintech@ptglab.com
W: ptglab.com

This product is exclusively available under Proteintech Group brand and is not available to purchase from any other manufacturer.

Selected Validation Data



The mean CCL9/10/MIP-1 gamma concentration was determined to be 174.4 ng/mL in mouse serum.



Cytometric bead array standard curve of MP02230-1, MOUSE CCL9/10/MIP-1 gamma Recombinant Matched Antibody Pair, PBS Only. Capture antibody: 86002-2-PBS. Detection antibody: 86002-1-PBS. Standard: Eg3336. Range: 1.563-100 ng/mL.