

For Research Use Only

CCL27 Recombinant antibody, PBS Only (Detector)

Catalog Number: 86007-1-PBS



Basic Information

Catalog Number: 86007-1-PBS	GenBank Accession Number: NM_006664	Purification Method: Protein A purification
Size: 100ug , Concentration: 1 mg/ml by Nanodrop;	GeneID (NCBI): 10850	CloneNo.: 242991C2
Source: Rabbit	UNIPROT ID: Q9Y4X3	
Isotype: IgG	Full Name: chemokine (C-C motif) ligand 27	
Immunogen Catalog Number: EG2461	Calculated MW: 13kd	

Applications

Tested Applications:
Sandwich ELISA, Indirect ELISA, Sample test

Species Specificity:
human

Product Information

86007-1-PBS targets CCL27 as part of a matched antibody pair:

MP02216-1: 86007-2-PBS capture and 86007-1-PBS detection (validated in Sandwich ELISA)

Unconjugated rabbit recombinant monoclonal antibody in PBS only (BSA and azide free) storage buffer at a concentration of 1 mg/mL, ready for conjugation. Created using Proteintech's proprietary in-house recombinant technology. Recombinant production enables unrivalled batch-to-batch consistency, easy scale-up, and future security of supply.

This conjugation ready format makes antibodies ideal for use in many applications including: ELISAs, multiplex assays requiring matched pairs, mass cytometry, and multiplex imaging applications. Antibody use should be optimized by the end user for each application and assay.

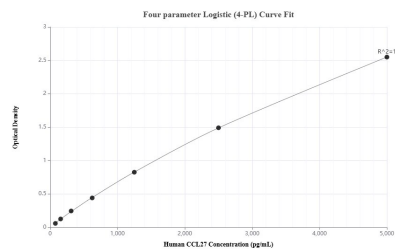
Storage

Storage:
Store at -80°C.
Storage Buffer:
PBS only, pH7.3

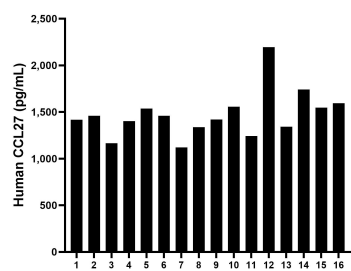
For technical support and original validation data for this product please contact:
T: 1 (888) 4PTGLAB (1-888-478-4522) (toll free in USA), or 1(312) 455-8498 (outside USA)
E: proteintech@ptglab.com
W: ptglab.com

This product is exclusively available under Proteintech Group brand and is not available to purchase from any other manufacturer.

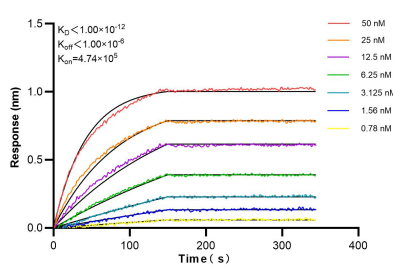
Selected Validation Data



Sandwich ELISA standard curve of MP02216-1, Human CCL27 Recombinant Matched Antibody Pair - PBS only. 86007-2-PBS was coated to a plate as the capture antibody and incubated with serial dilutions of standard Eg2461. 86007-1-PBS was HRP conjugated as the detection antibody. Range: 78.1-5000 pg/mL.



Serum of sixteen individual healthy human donors was measured. The human CCL27 concentration of detected samples was determined to be 1,471.41 pg/mL with a range of 1,120.1 - 2,195.4 pg/mL.



Biolayer interferometry (BLI) kinetic assays of 86007-1-PBS against Human CCL27 were performed. The affinity constant is below 1 pM.