

For Research Use Only

Rat CTGF Recombinant antibody, PBS Only (Detector)

Catalog Number: 86012-1-PBS



Basic Information

Catalog Number: 86012-1-PBS	GenBank Accession Number: NM_022266.2	Purification Method: Protein A purification
Size: 100ug, Concentration: 1 mg/ml by Nanodrop;	GeneID (NCBI): 64032	CloneNo.: 250663A4
Source: Rabbit	UNIPROT ID: Q9R1E9	
Isotype: IgG	Full Name: connective tissue growth factor	
Immunogen Catalog Number: EG3239	Calculated MW: 38 kDa	

Applications

Tested Applications:
Cytometric bead array, Sandwich ELISA, Indirect ELISA, Sample test

Species Specificity:
rat

Product Information

86012-1-PBS targets CTGF as part of a matched antibody pair:

MP02226-1: 86012-2-PBS capture and 86012-1-PBS detection (validated in Cytometric bead array)

MP02226-2: 86012-4-PBS capture and 86012-1-PBS detection (validated in Sandwich ELISA)

Unconjugated rabbit recombinant monoclonal antibody in PBS only (BSA and azide free) storage buffer at a concentration of 1 mg/mL, ready for conjugation. Created using Proteintech's proprietary in-house recombinant technology. Recombinant production enables unrivalled batch-to-batch consistency, easy scale-up, and future security of supply.

This conjugation ready format makes antibodies ideal for use in many applications including: ELISAs, multiplex assays requiring matched pairs, mass cytometry, and multiplex imaging applications. Antibody use should be optimized by the end user for each application and assay.

Storage

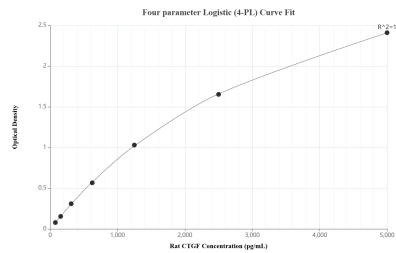
Storage:
Store at -80°C.

Storage Buffer:
PBS only, pH7.3

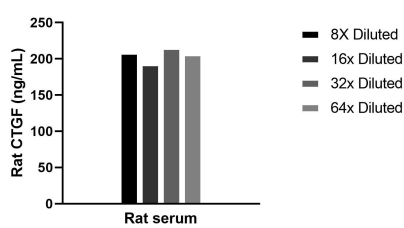
For technical support and original validation data for this product please contact:
T: 1 (888) 4PTGLAB (1-888-478-4522) (toll free in USA), or 1(312) 455-8498 (outside USA)
E: proteintech@ptglab.com
W: ptglab.com

This product is exclusively available under Proteintech Group brand and is not available to purchase from any other manufacturer.

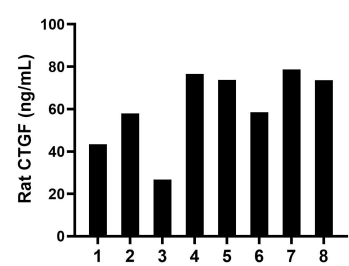
Selected Validation Data



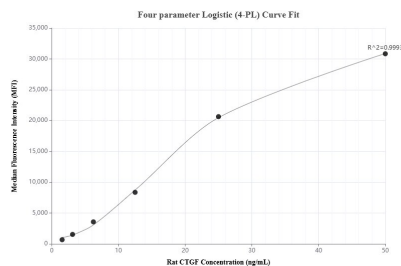
Sandwich ELISA standard curve of MP02226-2, Rat CTGF Recombinant Matched Antibody Pair - PBS only. 86012-4-PBS was coated to a plate as the capture antibody and incubated with serial dilutions of standard Eg3239. 86012-1-PBS was HRP conjugated as the detection antibody. Range: 78.1-5000 pg/mL



The mean CTGF concentration was determined to be 205.3 ng/mL in rat serum.



Serum of eight rats was measured. The CTGF concentration of detected samples was determined to be 61.2 ng/mL with a range of 26.8-78.7 ng/mL



Cytometric bead array standard curve of MP02226-1, RAT CTGF Recombinant Matched Antibody Pair, PBS Only. Capture antibody: 86012-2-PBS. Detection antibody: 86012-1-PBS. Standard: Eg3239. Range: 1.563-50 ng/mL