

For Research Use Only

Testin Recombinant monoclonal antibody, PBS Only

Catalog Number: 86013-3-PBS



Basic Information

Catalog Number: 86013-3-PBS	GenBank Accession Number: BC001451	Purification Method: Protein A purification
Size: 100ug , Concentration: 1 mg/ml by Nanodrop;	GeneID (NCBI): 26136	CloneNo.: 250432C8
Source: Rabbit	UNIPROT ID: Q9UGI8	
Isotype: IgG	Full Name: testis derived transcript (3 LIM domains)	
Immunogen Catalog Number: AG0379	Calculated MW: 48 kDa	
	Observed MW: 42-48 kDa	

Applications

Tested Applications:
WB, IF/ICC, IP, Indirect ELISA

Species Specificity:
human, mouse, rat

Background Information

Testin (TES) is a cytoskeleton-associated protein that localizes along actin stress fibers at cell-cell contact areas and at focal adhesion plaques. It interacts with a variety of cytoskeletal proteins and gets involved in regulation of cell adhesion and migration. TES is a putative tumor suppressor and reduced expression of TES has been reported in various cancers. In addition, TES is a marker for Sertoli-Germ Cell junction and is useful to monitor the disruption of intercellular junctions in the testis.

Storage

Storage:
Store at -80°C.

Storage Buffer:
PBS only, pH7.3

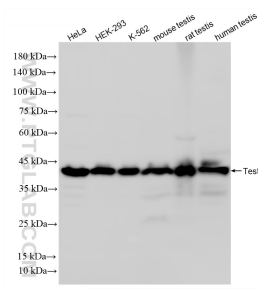
For technical support and original validation data for this product please contact:

T: 1 (888) 4PTGLAB (1-888-478-4522) (toll free in USA), or 1(312) 455-8498 (outside USA)

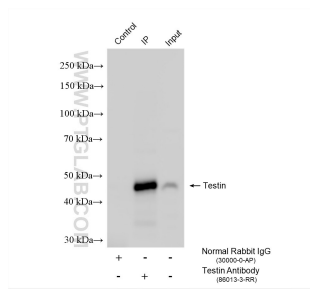
E: proteintech@ptglab.com
W: ptglab.com

This product is exclusively available under Proteintech Group brand and is not available to purchase from any other manufacturer.

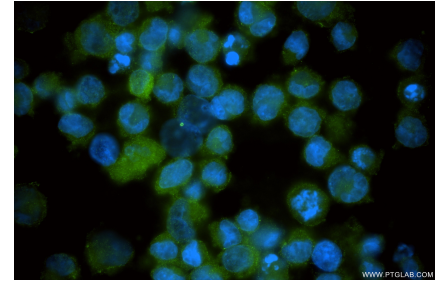
Selected Validation Data



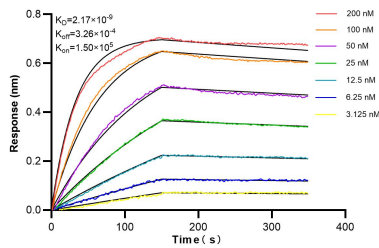
Various lysates were subjected to SDS PAGE followed by western blot with 86013-3-RR (Testin antibody) at dilution of 1:5000 incubated at room temperature for 1.5 hours. This data was developed using the same antibody clone with 86013-3-PBS in a different storage buffer formulation.



IP result of anti-Testin (IP:86013-3-RR, 4ug; Detection:86013-3-RR 1:1000) with K-562 cells lysate 2440 ug. This data was developed using the same antibody clone with 86013-3-PBS in a different storage buffer formulation.



Immunofluorescent analysis of (4% PFA) fixed K-562 cells using Testin antibody (86013-3-RR, Clone: 250432C8) at dilution of 1:400 and CoraLite@488-Conjugated Goat Anti-Rabbit IgG(H+L) (SA00013-2). This data was developed using the same antibody clone with 86013-3-PBS in a different storage buffer formulation.



Biolayer interferometry (BLI) kinetic assays of 86013-3-RR against Human Testin were performed. The affinity constant is 2.17 nM.