

For Research Use Only

# Testin Recombinant monoclonal antibody

Catalog Number:86013-3-RR



## Basic Information

<b>Catalog Number:</b> 86013-3-RR	<b>GenBank Accession Number:</b> BC001451	<b>Purification Method:</b> Protein A purification
<b>Size:</b> 100ul , Concentration: 1000 µg/ml by Nanodrop;	<b>GeneID (NCBI):</b> 26136	<b>CloneNo.:</b> 250432C8
<b>Source:</b> Rabbit	<b>UNIPROT ID:</b> Q9UGI8	<b>Recommended Dilutions:</b> WB: 1:2000-1:10000 IP: 0.5-4.0 ug for 1.0-3.0 mg of total protein lysate IF/ICC: 1:200-1:800
<b>Isotype:</b> IgG	<b>Full Name:</b> testis derived transcript (3 LIM domains)	
<b>Immunogen Catalog Number:</b> AG0379	<b>Calculated MW:</b> 48 kDa	
	<b>Observed MW:</b> 42-48 kDa	

## Applications

**Tested Applications:**  
WB, IF/ICC, IP, ELISA

**Species Specificity:**  
human, mouse, rat

### Positive Controls:

**WB :** HeLa cells, HEK-293 cells, K-562 cells, mouse testis tissue, rat testis tissue, human testis tissue

**IP :** K-562 cells,

**IF/ICC :** K-562 cells,

## Background Information

Testin (TES) is a cytoskeleton-associated protein that localizes along actin stress fibers at cell-cell contact areas and at focal adhesion plaques. It interacts with a variety of cytoskeletal proteins and gets involved in regulation of cell adhesion and migration. TES is a putative tumor suppressor and reduced expression of TES has been reported in various cancers. In addition, TES is a marker for Sertoli-Germ Cell junction and is useful to monitor the disruption of intercellular junctions in the testis.

## Storage

**Storage:**  
Store at -20°C. Stable for one year after shipment.

**Storage Buffer:**  
PBS with 0.02% sodium azide and 50% glycerol, pH7.3

Aliquoting is unnecessary for -20°C storage

\*\*\* 20ul sizes contain 0.1% BSA

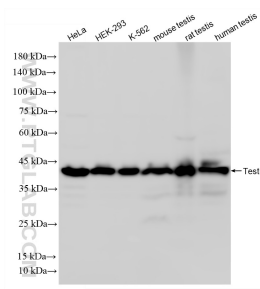
For technical support and original validation data for this product please contact:

T: 1 (888) 4PTGLAB (1-888-478-4522) (toll free in USA), or 1(312) 455-8498 (outside USA)

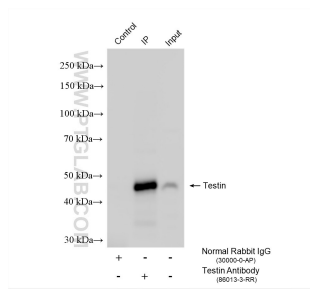
E: [proteintech@ptglab.com](mailto:proteintech@ptglab.com)  
W: [ptglab.com](http://ptglab.com)

This product is exclusively available under Proteintech Group brand and is not available to purchase from any other manufacturer.

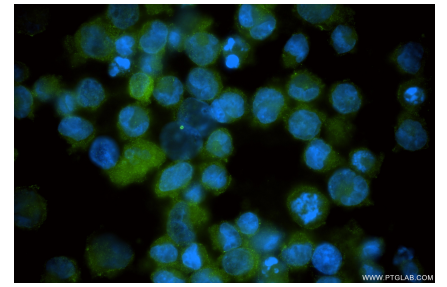
## Selected Validation Data



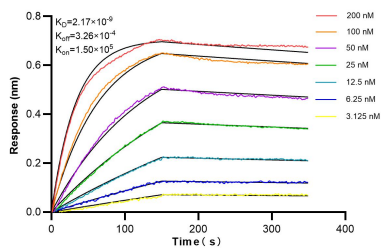
Various lysates were subjected to SDS PAGE followed by western blot with 86013-3-RR (Testin antibody) at dilution of 1:5000 incubated at room temperature for 1.5 hours.



IP result of anti-Testin (IP:86013-3-RR, 4ug; Detection:86013-3-RR 1:1000) with K-562 cells lysate 2440 ug.



Immunofluorescent analysis of (4% PFA) fixed K-562 cells using Testin antibody (86013-3-RR, Clone: 250432C8) at dilution of 1:400 and CoraLite@488-Conjugated Goat Anti-Rabbit IgG(H+L) (SA00013-2).



Biolayer interferometry (BLI) kinetic assays of 86013-3-RR against Human Testin were performed. The affinity constant is 2.17 nM.