

For Research Use Only

SMARCC1 Recombinant antibody, PBS Only (Capture)

Catalog Number: 86015-1-PBS



Basic Information

Catalog Number: 86015-1-PBS	GenBank Accession Number: BC050564	Purification Method: Protein A purification
Size: 100ug , Concentration: 1 mg/ml by Nanodrop;	GeneID (NCBI): 6599	CloneNo.: 250455A1
Source: Rabbit	UNIPROT ID: Q92922	
Isotype: IgG	Full Name: SWI/SNF related, matrix associated, actin dependent regulator of chromatin, subfamily c, member 1	
Immunogen Catalog Number: AG12109	Calculated MW: 1105 aa, 123 kDa	
	Observed MW: 155-160 kDa	

Applications

Tested Applications:
WB, IF/ICC, Cytometric bead array, Indirect ELISA, Sample test

Species Specificity:
human, mouse, rat

Product Information

86015-1-PBS targets SMARCC1 as part of a matched antibody pair:

MP02222-1: 86015-1-PBS capture and 86015-2-PBS detection (validated in Cytometric bead array)

Unconjugated rabbit recombinant monoclonal antibody in PBS only (BSA and azide free) storage buffer at a concentration of 1 mg/mL, ready for conjugation. Created using Proteintech's proprietary in-house recombinant technology. Recombinant production enables unrivalled batch-to-batch consistency, easy scale-up, and future security of supply.

This conjugation ready format makes antibodies ideal for use in many applications including: ELISAs, multiplex assays requiring matched pairs, mass cytometry, and multiplex imaging applications. Antibody use should be optimized by the end user for each application and assay.

Background Information

SMARCC1, also named as SWI/SNF complex 155 kDa subunit or BAF155, is a 1105 amino acid protein, which belongs to the SMARCC family. SMARCC1 is expressed in brain, heart, muscle, placenta, lung, liver, muscle, kidney and pancreas. SMARCC1 is involved in transcriptional activation and repression of select genes by chromatin remodeling. SMARCC1 may stimulate the ATPase activity of the catalytic subunit of the complex. SMARCC1 belongs to the neural progenitors-specific chromatin remodeling complex (npBAF complex) and the neuron-specific chromatin remodeling complex (nBAF complex). The calculated molecular weight of TCEA1 is 123 kDa, but modified SMARCC1 is about 155-160 kDa. (PMID: 24025402)

Storage

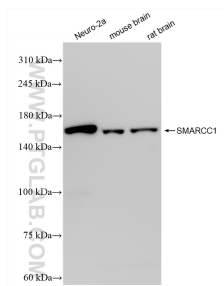
Storage:
Store at -80°C.

Storage Buffer:
PBS only, pH7.3

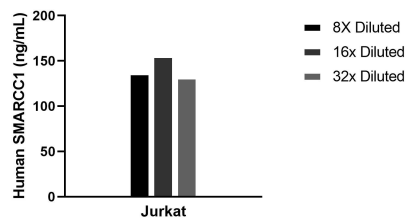
For technical support and original validation data for this product please contact:
T: 1 (888) 4PTGLAB (1-888-478-4522) (toll free in USA), or 1(312) 455-8498 (outside USA)
E: proteintech@ptglab.com
W: ptglab.com

This product is exclusively available under Proteintech Group brand and is not available to purchase from any other manufacturer.

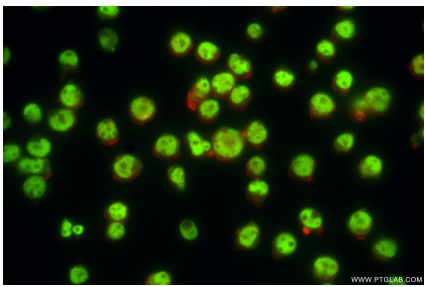
Selected Validation Data



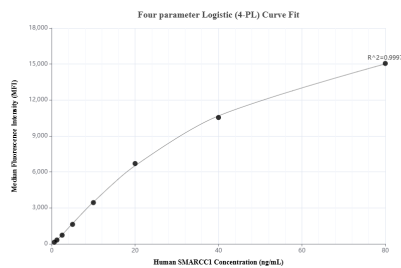
Various lysates were subjected to SDS PAGE followed by western blot with 86015-1-RR (SMARCC1 antibody) at dilution of 1:10000 incubated at room temperature for 1.5 hours. This data was developed using the same antibody clone with 86015-1-PBS in a different storage buffer formulation.



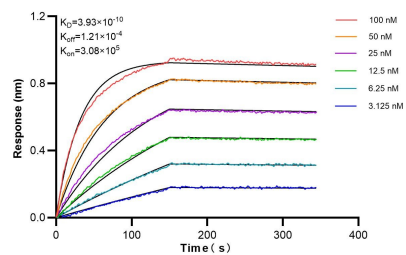
The mean SMARCC1 concentration was determined to be 130.2 ng/mL in Jurkat cell extract based on a 2.2 mg/mL extract load.



Immunofluorescent analysis of (4% PFA) fixed Jurkat cells using SMARCC1 antibody (86015-1-RR, Clone: 250455A1) at dilution of 1:500 and CoraLite®488-Conjugated Goat Anti-Rabbit IgG(H+L) (SA00013-2), CL594-Phalloidin (red). This data was developed using the same antibody clone with 86015-1-PBS in a different storage buffer formulation.



Cytometric bead array standard curve of MP02222-1, SMARCC1 Recombinant Matched Antibody Pair, PBS Only. Capture antibody: 86015-1-PBS. Detection antibody: 86015-2-PBS. Standard: Ag12109. Range: 0.625-80 ng/mL.



Biolayer interferometry (BLI) kinetic assays of 86015-1-RR against Human SMARCC1 were performed. The affinity constant is 0.393 nM.