

For Research Use Only

# SMARCC1 Recombinant antibody

Catalog Number: 86015-1-RR



## Basic Information

<b>Catalog Number:</b> 86015-1-RR	<b>GenBank Accession Number:</b> BC050564	<b>Purification Method:</b> Protein A purification
<b>Size:</b> 100ul , Concentration: 1000 µg/ml by Nanodrop;	<b>GeneID (NCBI):</b> 6599	<b>CloneNo.:</b> 250455A1
<b>Source:</b> Rabbit	<b>UNIPROT ID:</b> Q92922	<b>Recommended Dilutions:</b> WB: 1:5000-1:50000 IF/ICC: 1:250-1:1000
<b>Isotype:</b> IgG	<b>Full Name:</b> SWI/SNF related, matrix associated, actin dependent regulator of chromatin, subfamily c, member 1	
<b>Immunogen Catalog Number:</b> AG12109	<b>Calculated MW:</b> 1105 aa, 123 kDa	
	<b>Observed MW:</b> 155-160 kDa	

## Applications

<b>Tested Applications:</b> WB, IF/ICC, ELISA	<b>Positive Controls:</b>
<b>Species Specificity:</b> human, mouse, rat	<b>WB :</b> Neuro-2a cells, mouse brain tissue, rat brain tissue <b>IF/ICC :</b> Jurkat cells,

## Background Information

SMARCC1, also named as SWI/SNF complex 155 kDa subunit or BAF155, is a 1105 amino acid protein, which belongs to the SMARCC family. SMARCC1 is expressed in brain, heart, muscle, placenta, lung, liver, muscle, kidney and pancreas. SMARCC1 is involved in transcriptional activation and repression of select genes by chromatin remodeling. SMARCC1 may stimulate the ATPase activity of the catalytic subunit of the complex. SMARCC1 belongs to the neural progenitors-specific chromatin remodeling complex (npBAF complex) and the neuron-specific chromatin remodeling complex (nBAF complex). The calculated molecular weight of TCEA1 is 123 kDa, but modified SMARCC1 is about 155-160 kDa. (PMID: 24025402)

## Storage

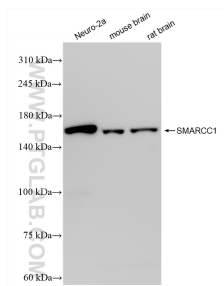
**Storage:**  
Store at -20°C. Stable for one year after shipment.  
**Storage Buffer:**  
PBS with 0.02% sodium azide and 50% glycerol, pH7.3  
**Aliquoting is unnecessary for -20°C storage**

\*\*\* 20ul sizes contain 0.1% BSA

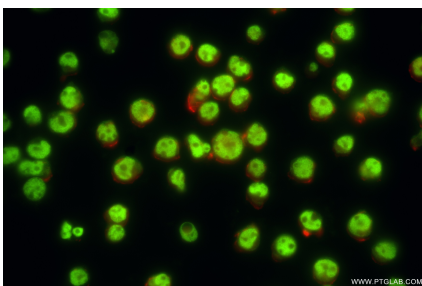
For technical support and original validation data for this product please contact:  
T: 1 (888) 4PTGLAB (1-888-478-4522) (toll free in USA), or 1(312) 455-8498 (outside USA)  
E: [proteintech@ptglab.com](mailto:proteintech@ptglab.com)  
W: [ptglab.com](http://ptglab.com)

This product is exclusively available under Proteintech Group brand and is not available to purchase from any other manufacturer.

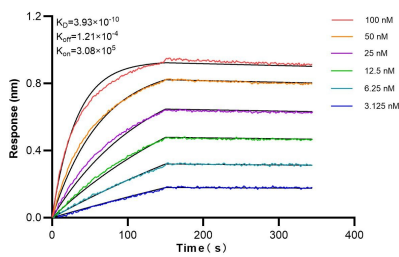
## Selected Validation Data



Various lysates were subjected to SDS PAGE followed by western blot with 86015-1-RR (SMARCC1 antibody) at dilution of 1:10000 incubated at room temperature for 1.5 hours.



Immunofluorescent analysis of (4% PFA) fixed Jurkat cells using SMARCC1 antibody (86015-1-RR, Clone: 250455A1) at dilution of 1:500 and CoraLite® 488-Conjugated Goat Anti-Rabbit IgG(H+L) (SA00013-2), CL594-Phalloidin (red).



Biolayer interferometry (BLI) kinetic assays of 86015-1-RR against Human SMARCC1 were performed. The affinity constant is 0.393 nM.