

For Research Use Only

SMARCC1 Recombinant antibody, PBS Only (Capture)

Catalog Number: 86015-3-PBS



Basic Information

| | | |
|---|--|---|
| Catalog Number: 86015-3-PBS | GenBank Accession Number: BC050564 | Purification Method: Protein A purification |
| Size: 100ug , Concentration: 1 mg/ml by Nanodrop; | GeneID (NCBI): 6599 | CloneNo.: 250455D11 |
| Source: Rabbit | UNIPROT ID: Q92922 | |
| Isotype: IgG | Full Name: SWI/SNF related, matrix associated, actin dependent regulator of chromatin, subfamily c, member 1 | |
| Immunogen Catalog Number: AG12109 | Calculated MW: 1105 aa, 123 kDa | |

Applications

Tested Applications:
Sandwich ELISA, Indirect ELISA, Sample test

Species Specificity:
human

Product Information

86015-3-PBS targets SMARCC1 as part of a matched antibody pair:

MP02222-2: 86015-3-PBS capture and 86015-2-PBS detection (validated in Sandwich ELISA)

Unconjugated rabbit recombinant monoclonal antibody in PBS only (BSA and azide free) storage buffer at a concentration of 1 mg/mL, ready for conjugation. Created using Proteintech's proprietary in-house recombinant technology. Recombinant production enables unrivalled batch-to-batch consistency, easy scale-up, and future security of supply.

This conjugation ready format makes antibodies ideal for use in many applications including: ELISAs, multiplex assays requiring matched pairs, mass cytometry, and multiplex imaging applications. Antibody use should be optimized by the end user for each application and assay.

Storage

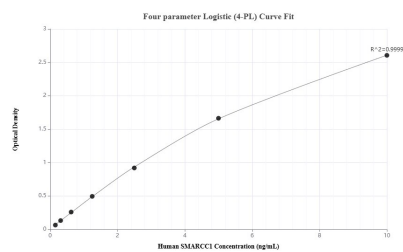
Storage:
Store at -80°C.

Storage Buffer:
PBS only, pH7.3

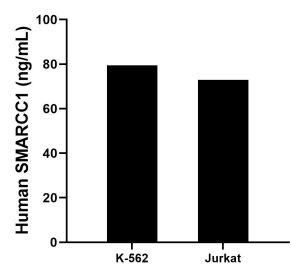
For technical support and original validation data for this product please contact:
T: 1 (888) 4PTGLAB (1-888-478-4522) (toll free in USA), or 1(312) 455-8498 (outside USA)
E: proteintech@ptglab.com
W: ptglab.com

This product is exclusively available under Proteintech Group brand and is not available to purchase from any other manufacturer.

Selected Validation Data



Sandwich ELISA standard curve of MP02222-2, Human SMARCC1 Recombinant Matched Antibody Pair - PBS only. 86015-3-PBS was coated to a plate as the capture antibody and incubated with serial dilutions of standard Ag12109. 86015-2-PBS was HRP conjugated as the detection antibody. Range: 0.156-10 ng/mL



The mean SMARCC1 concentration was determined to be 79.50 ng/mL in K-562 cell extract based on a 3.0 mg/mL extract load and 72.90 ng/mL in Jurkat cell extract based on a 2.2 mg/mL extract load.