

For Research Use Only

# GIRK2 Recombinant antibody, PBS Only

Catalog Number: 86016-1-PBS



## Basic Information

Catalog Number:

86016-1-PBS

Size:

100ug, Concentration: 1 mg/ml by Nanodrop;

Source:

Rabbit

Isotype:

IgG

Immunogen Catalog Number:

AG16344

GenBank Accession Number:

BC101547

GeneID (NCBI):

3763

UNIPROT ID:

P48051

Full Name:

potassium inwardly-rectifying channel, subfamily J, member 6

Calculated MW:

423 aa, 48 kDa

Observed MW:

45-48 kDa

Purification Method:

Protein A purification

CloneNo.:

250605D1

## Applications

Tested Applications:

WB, Indirect ELISA

Species Specificity:

human, mouse, rat

## Background Information

GIRK2 (also known as Kir3.2), encoded by KCNJ6 gene, is a member of the G protein-coupled inwardly-rectifying potassium channel (GIRK, Kir3) family of inward rectifier potassium channels. GIRK channels are activated following stimulation of G protein-coupled receptors (PMID: 26422984). They play important roles in regulating cellular excitabilities in the heart and brain (PMID: 31043612). Mutations in KCNJ6 gene are associated with Keppen-Lubinsky Syndrome (PMID: 25620207).

## Storage

Storage:

Store at -80°C.

Storage Buffer:

PBS only, pH7.3

For technical support and original validation data for this product please contact:

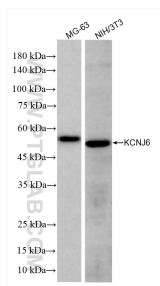
T: 1 (888) 4PTGLAB (1-888-478-4522) (toll free in USA), or 1(312) 455-8498 (outside USA)

E: [proteintech@ptglab.com](mailto:proteintech@ptglab.com)

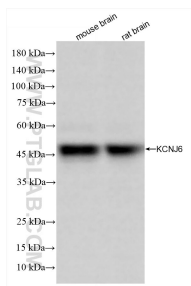
W: [ptglab.com](http://ptglab.com)

This product is exclusively available under Proteintech Group brand and is not available to purchase from any other manufacturer.

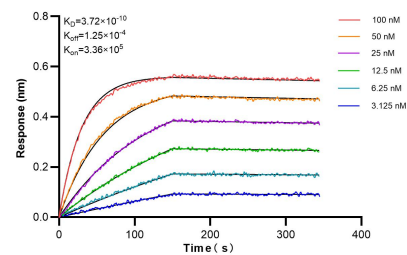
## Selected Validation Data



Various lysates were subjected to SDS PAGE followed by western blot with 86016-1-RR (KCNJ6 antibody) at dilution of 1:10000 incubated at room temperature for 1.5 hours. This data was developed using the same antibody clone with 86016-1-PBS in a different storage buffer formulation.



Various lysates were subjected to SDS PAGE followed by western blot with 86016-1-RR (KCNJ6 antibody) at dilution of 1:10000 incubated at room temperature for 1.5 hours. This data was developed using the same antibody clone with 86016-1-PBS in a different storage buffer formulation.



Biolayer interferometry (BLI) kinetic assays of 86016-1-RR against Human GIRK2 were performed. The affinity constant is 0.372 nM.