

For Research Use Only

GIRK2 Recombinant antibody

Catalog Number: 86016-1-RR



Basic Information

Catalog Number:

86016-1-RR

Size:

100ul, Concentration: 1000 µg/ml by Nanodrop;

Source:

Rabbit

Isotype:

IgG

Immunogen Catalog Number:

AG16344

GenBank Accession Number:

BC101547

GeneID (NCBI):

3763

UNIPROT ID:

P48051

Full Name:

potassium inwardly-rectifying channel, subfamily J, member 6

Calculated MW:

423 aa, 48 kDa

Observed MW:

45-48 kDa

Purification Method:

Protein A purification

CloneNo.:

250605D1

Recommended Dilutions:

WB: 1:5000-1:50000

Applications

Tested Applications:

WB, ELISA

Species Specificity:

human, mouse, rat

Positive Controls:

WB : MG-63 cells, mouse brain tissue, NIH/3T3 cells, rat brain tissue

Background Information

GIRK2 (also known as Kir3.2), encoded by KCNJ6 gene, is a member of the G protein-coupled inwardly-rectifying potassium channel (GIRK, Kir3) family of inward rectifier potassium channels. GIRK channels are activated following stimulation of G protein-coupled receptors (PMID: 26422984). They play important roles in regulating cellular excitabilities in the heart and brain (PMID: 31043612). Mutations in KCNJ6 gene are associated with Keppen-Lubinsky Syndrome (PMID: 25620207).

Storage

Storage:

Store at -20°C. Stable for one year after shipment.

Storage Buffer:

PBS with 0.02% sodium azide and 50% glycerol, pH7.3

Aliquoting is unnecessary for -20°C storage

*** 20ul sizes contain 0.1% BSA

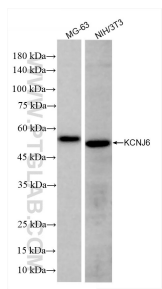
For technical support and original validation data for this product please contact:

T: 1 (888) 4PTGLAB (1-888-478-4522) (toll free in USA), or 1(312) 455-8498 (outside USA)

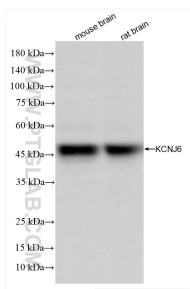
E: proteintech@ptglab.com
W: ptglab.com

This product is exclusively available under Proteintech Group brand and is not available to purchase from any other manufacturer.

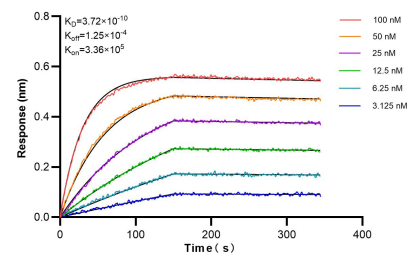
Selected Validation Data



Various lysates were subjected to SDS PAGE followed by western blot with 86016-1-RR (KCNJ6 antibody) at dilution of 1:10000 incubated at room temperature for 1.5 hours.



Various lysates were subjected to SDS PAGE followed by western blot with 86016-1-RR (KCNJ6 antibody) at dilution of 1:10000 incubated at room temperature for 1.5 hours.



Biolayer interferometry (BLI) kinetic assays of 86016-1-RR against Human GIRK2 were performed. The affinity constant is 0.372 nM.