

For Research Use Only

KDM5C Recombinant monoclonal antibody, PBS Only (Capture)

Catalog Number:86017-3-PBS



Basic Information

Catalog Number: 86017-3-PBS	GenBank Accession Number: BC054499	Purification Method: Protein A purification
Size: 100ug , Concentration: 1 mg/ml by Nanodrop;	GeneID (NCBI): 8242	CloneNo.: 250484E10
Source: Rabbit	UNIPROT ID: P41229	
Isotype: IgG	Full Name: lysine (K)-specific demethylase 5C	
Immunogen Catalog Number: AG5791	Calculated MW: 176 kDa	

Applications

Tested Applications:
Sandwich ELISA, Indirect ELISA, Sample test

Species Specificity:
human

Product Information

86017-3-PBS targets KDM5C as part of a matched antibody pair:

MP02624-1: 86017-3-PBS capture and 86017-2-PBS detection (validated in Sandwich ELISA)

Unconjugated rabbit recombinant monoclonal antibody in PBS only (BSA and azide free) storage buffer at a concentration of 1 mg/mL, ready for conjugation. Created using Proteintech's proprietary in-house recombinant technology. Recombinant production enables unrivalled batch-to-batch consistency, easy scale-up, and future security of supply.

This conjugation ready format makes antibodies ideal for use in many applications including: ELISAs, multiplex assays requiring matched pairs, mass cytometry, and multiplex imaging applications. Antibody use should be optimized by the end user for each application and assay.

Storage

Storage:
Store at -80°C.
Storage Buffer:
PBS only, pH7.3

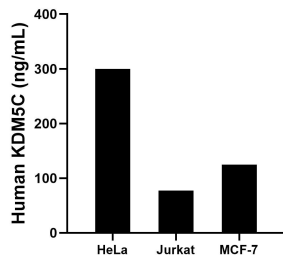
For technical support and original validation data for this product please contact:

T: 1 (888) 4PTGLAB (1-888-478-4522) (toll free in USA), or 1(312) 455-8498 (outside USA)

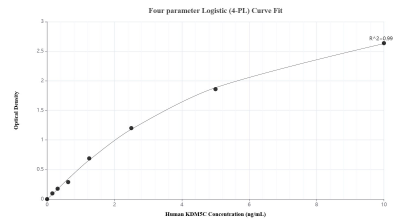
E: proteintech@ptglab.com
W: ptglab.com

This product is exclusively available under Proteintech Group brand and is not available to purchase from any other manufacturer.

Selected Validation Data



The mean KDM5C concentration was determined to be 299.61 ng/mL in HeLa cell extract based on a 1.10 mg/mL extract load, 77.16 ng/mL in Jurkat cell extract based on a 1.20 mg/mL extract load and 124.98 ng/mL in MCF-7 cell extract based on a 1.30 mg/mL extract load.



Sandwich ELISA standard curve of MP02624-1, Human KDM5C Recombinant Matched Antibody Pair - PBS only. 86017-3-PBS was coated to a plate as the capture antibody and incubated with serial dilutions of standard Ag5791. 86017-2-PBS was HRP conjugated as the detection antibody. Range: 0.156-10 ng/mL.