

For Research Use Only

# Mouse CD8b Recombinant monoclonal antibody, PBS Only (Capture)

Catalog Number: 86024-1-PBS



## Basic Information

<b>Catalog Number:</b> 86024-1-PBS	<b>GenBank Accession Number:</b> NM_009858.2	<b>Purification Method:</b> Protein A purification
<b>Size:</b> 100ug , Concentration: 1 mg/ml by Nanodrop;	<b>GeneID (NCBI):</b> 12526	<b>CloneNo.:</b> 250480F2
<b>Source:</b> Rabbit	<b>UNIPROT ID:</b> P10300	
<b>Isotype:</b> IgG	<b>Full Name:</b> CD8 antigen, beta chain 1	
<b>Immunogen Catalog Number:</b> EG4275	<b>Calculated MW:</b> 24 kDa	
	<b>Observed MW:</b> 26-30 kDa	

## Applications

**Tested Applications:**  
WB, Indirect ELISA

**Species Specificity:**  
mouse

## Product Information

86024-1-PBS targets CD8b as part of a matched antibody pair:

MP02794-1: 86024-1-PBS capture and 86024-2-PBS detection (validated in Cytometric bead array)

Unconjugated rabbit recombinant monoclonal antibody in PBS only (BSA and azide free) storage buffer at a concentration of 1 mg/mL, ready for conjugation. Created using Proteintech's proprietary in-house recombinant technology. Recombinant production enables unrivalled batch-to-batch consistency, easy scale-up, and future security of supply.

This conjugation ready format makes antibodies ideal for use in many applications including: ELISAs, multiplex assays requiring matched pairs, mass cytometry, and multiplex imaging applications. Antibody use should be optimized by the end user for each application and assay.

## Background Information

CD8b (T-cell surface glycoprotein CD8 beta chain) is an integral membrane glycoprotein that forms disulfide-linked heterodimers with CD8a (CD8 alpha chain). The CD8 alpha/beta heterodimer is the predominant CD8 complex expressed on the cell surface (PMID: 1534146; 2111591). CD8 is a transmembrane glycoprotein predominantly expressed on cytotoxic T cells and can also be found on natural killer cells, cortical thymocytes, and dendritic cells. CD8 serves as a co-receptor for the T cell receptor (TCR). Both CD8 and TCR recognize antigens displayed by an antigen presenting cell (APC) in the context of class I MHC molecules. CD8 plays a role in T cell development and activation of mature T cells.

## Storage

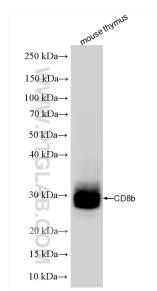
**Storage:**  
Store at -80°C.

**Storage Buffer:**  
PBS only, pH7.3

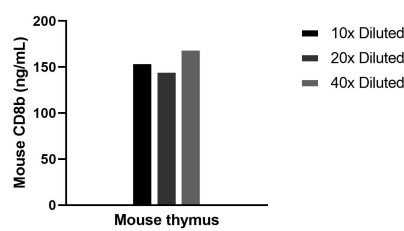
For technical support and original validation data for this product please contact:  
T: 1 (888) 4PTGLAB (1-888-478-4522) (toll free in USA), or 1(312) 455-8498 (outside USA)  
E: [proteintech@ptglab.com](mailto:proteintech@ptglab.com)  
W: [ptglab.com](http://ptglab.com)

This product is exclusively available under Proteintech Group brand and is not available to purchase from any other manufacturer.

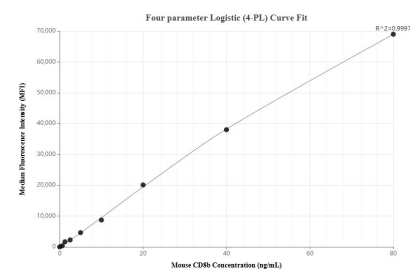
## Selected Validation Data



Mouse thymus tissue was subjected to SDS PAGE followed by western blot with 86024-1-RR (CD8 beta antibody) at dilution of 1:5000 incubated at room temperature for 1.5 hours. This data was developed using the same antibody clone with 86024-1-PBS in a different storage buffer formulation.



The mean CD8b concentration was determined to be 157.0 ng/mL in Mouse thymus tissue extract based on a 5.8 mg/mL extract load.



Cytometric bead array standard curve of MP02794-1, MOUSE CD8b Recombinant Matched Antibody Pair, PBS Only. Capture antibody: 86024-1-PBS. Detection antibody: 86024-2-PBS. Standard: Eg4275. Range: 0.625-80 ng/mL.