

For Research Use Only



Mouse CD8 beta Recombinant monoclonal antibody, PBS Only (Detector)

Catalog Number: 86024-2-PBS

Basic Information

Catalog Number: 86024-2-PBS	GenBank Accession Number: NM_009858.2	Purification Method: Protein A purification
Size: 100ug , Concentration: 1 mg/ml by Nanodrop;	GeneID (NCBI): 12526	CloneNo.: 250480D12
Source: Rabbit	UNIPROT ID: P10300	
Isotype: IgG	Full Name: CD8 antigen, beta chain 1	
Immunogen Catalog Number: EG4275	Calculated MW: 24 kDa	

Applications

Tested Applications:
Cytometric bead array, Indirect ELISA

Species Specificity:
mouse

Product Information

86024-2-PBS targets CD8 beta as part of a matched antibody pair:

MP02794-1: 86024-1-PBS capture and 86024-2-PBS detection (validated in Cytometric bead array)

Unconjugated rabbit recombinant monoclonal antibody in PBS only (BSA and azide free) storage buffer at a concentration of 1 mg/mL, ready for conjugation. Created using Proteintech's proprietary in-house recombinant technology. Recombinant production enables unrivalled batch-to-batch consistency, easy scale-up, and future security of supply.

This conjugation ready format makes antibodies ideal for use in many applications including: ELISAs, multiplex assays requiring matched pairs, mass cytometry, and multiplex imaging applications. Antibody use should be optimized by the end user for each application and assay.

Storage

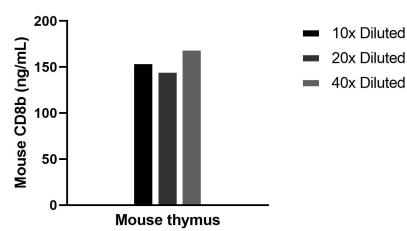
Storage:
Store at -80°C.

Storage Buffer:
PBS only, pH7.3

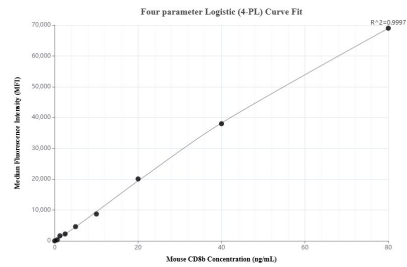
For technical support and original validation data for this product please contact:
T: 1 (888) 4PTGLAB (1-888-478-4522) (toll free in USA), or 1(312) 455-8498 (outside USA)
E: proteintech@ptglab.com
W: ptglab.com

This product is exclusively available under Proteintech Group brand and is not available to purchase from any other manufacturer.

Selected Validation Data



The mean CD8b concentration was determined to be 157.0 ng/mL in Mouse thymus tissue extract based on a 5.8 mg/mL extract load.



Cytometric bead array standard curve of MP02794-1, MOUSE CD8b Recombinant Matched Antibody Pair, PBS Only. Capture antibody: 86024-1-PBS. Detection antibody: 86024-2-PBS. Standard: Eg4275. Range: 0.625-80 ng/mL.