

For Research Use Only

CD226 Recombinant antibody

Catalog Number: 86025-1-RR



Basic Information

Catalog Number: 86025-1-RR	GenBank Accession Number: NM_178687.2	Purification Method: Protein A purification
Size: 100ul , Concentration: 1000 µg/ml by Nanodrop;	GeneID (NCBI): 225825	CloneNo.: 250384D8
Source: Rabbit	UNIPROT ID: Q8K4FO	Recommended Dilutions: WB: 1:500-1:2000
Isotype: IgG	Full Name: CD226 antigen	
Immunogen Catalog Number: EG1588	Calculated MW: 39 kDa	
	Observed MW: 60-75 kDa	

Applications

Tested Applications: WB, ELISA	Positive Controls: WB : mouse spleen tissue,
Species Specificity: mouse	

Background Information

CD226 (DNAM-1) is a ~65 kDa glycoprotein expressed on the surface of NK cells, platelets, monocytes, and a subset of T cells. It is a member of the Ig-superfamily containing 2 Ig-like domains of the V-set. CD226 mediates cellular adhesion of platelets and megakaryocytic cells to vascular endothelial cells. The protein also plays a role in megakaryocytic cell maturation. Interactions of CD226 and its ligands, CD155 and CD112, induce NK and T cell-mediated cytotoxicity and cytokine secretion (PMID: 15039383).

Storage

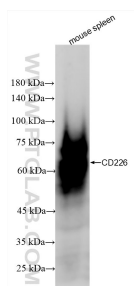
Storage:
Store at -20°C. Stable for one year after shipment.
Storage Buffer:
PBS with 0.02% sodium azide and 50% glycerol, pH7.3
Aliquoting is unnecessary for -20°C storage

*** 20ul sizes contain 0.1% BSA

For technical support and original validation data for this product please contact:
T: 1 (888) 4PTGLAB (1-888-478-4522) (toll free in USA), or 1(312) 455-8498 (outside USA)
E: proteintech@ptglab.com
W: ptglab.com

This product is exclusively available under Proteintech Group brand and is not available to purchase from any other manufacturer.

Selected Validation Data



Mouse spleen lysate was subjected to SDS PAGE followed by western blot with 86025-1-RR (CD226 antibody) at dilution of 1:1000 incubated at room temperature for 1.5 hours.