

For Research Use Only

# ESM1 Recombinant antibody, PBS Only

Catalog Number: 86027-1-PBS



## Basic Information

<b>Catalog Number:</b> 86027-1-PBS	<b>GenBank Accession Number:</b> BC011989	<b>Purification Method:</b> Protein A purification
<b>Size:</b> 100ug , Concentration: 1 mg/ml by Nanodrop;	<b>GeneID (NCBI):</b> 11082	<b>CloneNo.:</b> 250287H3
<b>Source:</b> Rabbit	<b>UNIPROT ID:</b> Q9NQ30	
<b>Isotype:</b> IgG	<b>Full Name:</b> endothelial cell-specific molecule 1	
<b>Immunogen Catalog Number:</b> AG3019	<b>Calculated MW:</b> 184 aa, 20 kDa	
	<b>Observed MW:</b> 14 kDa	

## Applications

**Tested Applications:**  
WB, Indirect ELISA

**Species Specificity:**  
human, mouse, rat

## Background Information

ESM1, also known as endocan or endothelial cell-specific molecule 1, is a protein-coding gene that encodes a secreted proteoglycan primarily expressed in endothelial cells of human tissues, including lung, kidney, and vascular systems. The protein consists of a 20 kDa core protein with a dermatan sulfate chain, forming a 50 kDa mature proteoglycan. ESM1 plays a crucial role in endothelial cell proliferation, migration, and angiogenesis (blood vessel formation). It modulates vascular development and maintains endothelial homeostasis. Overexpression of ESM1 is observed in cancers such as gastric, cervical, and lung tumors, where it promotes angiogenesis and tumor progression via pathways like VEGF/ERK signaling. Elevated serum ESM1 levels are associated with poor clinical outcomes in cancer patients.

## Storage

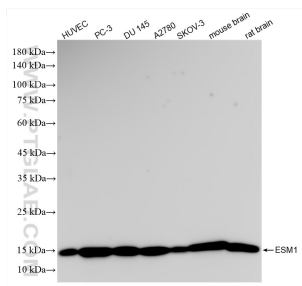
**Storage:**  
Store at -80°C.

**Storage Buffer:**  
PBS only, pH7.3

For technical support and original validation data for this product please contact:  
T: 1 (888) 4PTGLAB (1-888-478-4522) (toll free in USA), or 1(312) 455-8498 (outside USA)  
E: [proteintech@ptglab.com](mailto:proteintech@ptglab.com)  
W: [ptglab.com](http://ptglab.com)

This product is exclusively available under Proteintech Group brand and is not available to purchase from any other manufacturer.

## Selected Validation Data



Various lysates were subjected to SDS PAGE followed by western blot with 86027-1-RR (ESM1 antibody) at dilution of 1:5000 incubated at room temperature for 1.5 hours. This data was developed using the same antibody clone with 86027-1-PBS in a different storage buffer formulation.