

For Research Use Only

ESM1 Recombinant antibody

Catalog Number: 86027-1-RR



Basic Information

Catalog Number: 86027-1-RR	GenBank Accession Number: BC011989	Purification Method: Protein A purification
Size: 100ul , Concentration: 1000 µg/ml by Nanodrop;	GeneID (NCBI): 11082	CloneNo.: 250287H3
Source: Rabbit	UNIPROT ID: Q9NQ30	Recommended Dilutions: WB: 1:1000-1:6000
Isotype: IgG	Full Name: endothelial cell-specific molecule 1	
Immunogen Catalog Number: AG3019	Calculated MW: 184 aa, 20 kDa	
	Observed MW: 14 kDa	

Applications

Tested Applications: WB, ELISA	Positive Controls: WB : HUVEC cells, PC-3 cells, DU 145 cells, A2780 cells, SKOV-3 cells, mouse brain tissue, rat brain tissue
Species Specificity: human, mouse, rat	

Background Information

ESM1, also known as endocan or endothelial cell-specific molecule 1, is a protein-coding gene that encodes a secreted proteoglycan primarily expressed in endothelial cells of human tissues, including lung, kidney, and vascular systems. The protein consists of a 20 kDa core protein with a dermatan sulfate chain, forming a 50 kDa mature proteoglycan. ESM1 plays a crucial role in endothelial cell proliferation, migration, and angiogenesis (blood vessel formation). It modulates vascular development and maintains endothelial homeostasis. Overexpression of ESM1 is observed in cancers such as gastric, cervical, and lung tumors, where it promotes angiogenesis and tumor progression via pathways like VEGF/ERK signaling. Elevated serum ESM1 levels are associated with poor clinical outcomes in cancer patients.

Storage

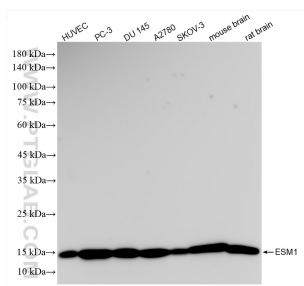
Storage:
Store at -20°C. Stable for one year after shipment.
Storage Buffer:
PBS with 0.02% sodium azide and 50% glycerol, pH7.3
Aliquoting is unnecessary for -20°C storage

*** 20ul sizes contain 0.1% BSA

For technical support and original validation data for this product please contact:
T: 1 (888) 4PTGLAB (1-888-478-4522) (toll free in USA), or 1(312) 455-8498 (outside USA)
E: proteintech@ptglab.com
W: ptglab.com

This product is exclusively available under Proteintech Group brand and is not available to purchase from any other manufacturer.

Selected Validation Data



Various lysates were subjected to SDS PAGE followed by western blot with 86027-1-RR (ESM1 antibody) at dilution of 1:5000 incubated at room temperature for 1.5 hours.