

For Research Use Only

# MRC2 Recombinant antibody

Catalog Number: 86028-1-RR



## Basic Information

<b>Catalog Number:</b> 86028-1-RR	<b>GenBank Accession Number:</b> NM_006039.5	<b>Purification Method:</b> Protein A purification
<b>Size:</b> 100ul , Concentration: 1000 µg/ml by Nanodrop;	<b>GeneID (NCBI):</b> 9902	<b>CloneNo.:</b> 250494D5
<b>Source:</b> Rabbit	<b>UNIPROT ID:</b> Q9UBGO	<b>Recommended Dilutions:</b> WB: 1:2000-1:10000
<b>Isotype:</b> IgG	<b>Full Name:</b> mannose receptor, C type 2	
<b>Immunogen Catalog Number:</b> EG2653	<b>Calculated MW:</b> 167 kDa	
	<b>Observed MW:</b> 180 kDa	

## Applications

<b>Tested Applications:</b> WB, ELISA	<b>Positive Controls:</b> WB : Saos-2 cells, U2OS cells, A172 cells, mouse lung tissue, rat lung tissue
<b>Species Specificity:</b> human, mouse, rat	

## Background Information

C-type mannose receptor 2 (MRC2), also known as CD280, CLEC13E, ENDO180, KIAA0709, or UPARAP, is a type I transmembrane glycoprotein that belongs to the macrophage mannose receptor protein family (PMID: 10683150; 10636902; 9734811). It contains an N-terminal cysteine-rich domain, a fibronectin type II domain (FNII), eight C-type-lectin-like domains, and a transmembrane region followed by a small cytoplasmic domain (PMID: 34012764). MRC2 is a recycling endocytic receptor that functions in both these cellular activities by promoting cell migration and uptake of collagens for intracellular degradation (PMID: 17974964). MRC2 is expressed in several cells and organs including fibroblasts, endothelial cells, and macrophages. Altered MRC2 expression has been associated with the development and progression of different cancers, including head and neck squamous cell carcinoma, breast cancer, hepatocellular cancer, and prostate cancer (PMID: 36188226; 37666484; 17974964; 25162823).

## Storage

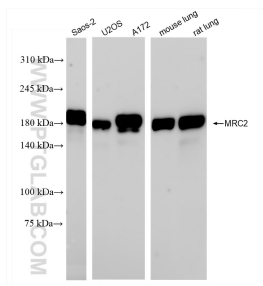
**Storage:**  
Store at -20°C. Stable for one year after shipment.  
**Storage Buffer:**  
PBS with 0.02% sodium azide and 50% glycerol, pH7.3  
**Aliquoting is unnecessary for -20°C storage**

\*\*\* 20ul sizes contain 0.1% BSA

For technical support and original validation data for this product please contact:  
T: 1 (888) 4PTGLAB (1-888-478-4522) (toll free in USA), or 1(312) 455-8498 (outside USA)  
E: proteintech@ptglab.com  
W: ptglab.com

This product is exclusively available under Proteintech Group brand and is not available to purchase from any other manufacturer.

## Selected Validation Data



Various lysates were subjected to SDS PAGE followed by western blot with 86028-1-RR (MRC2 antibody) at dilution of 1:5000 incubated at room temperature for 1.5 hours.