

For Research Use Only

GIPC1 Recombinant antibody, PBS Only

Catalog Number: 86030-1-PBS



Basic Information

Catalog Number:

86030-1-PBS

Size:

100ug, Concentration: 1 mg/ml by Nanodrop;

Source:

Rabbit

Isotype:

IgG

Immunogen Catalog Number:

AG6597

GenBank Accession Number:

BC000410

GeneID (NCBI):

10755

UNIPROT ID:

O14908

Full Name:

GIPC PDZ domain containing family, member 1

Calculated MW:

36 kDa

Observed MW:

42 kDa

Purification Method:

Protein A purification

CloneNo.:

250445F5

Applications

Tested Applications:

WB, Indirect ELISA

Species Specificity:

human, mouse, rat

Background Information

GAIP interacting protein C terminus, member 1(GIPC1), also known as PDZ domain-containing protein GIPC1, is a cytoplasmic protein that also localizes to the peripheral membrane, acting as an adaptor protein linking receptor interactions to intracellular signaling pathways, including cell cycle regulation, and expression has been associated with some cancers (PMID: 19175293, 26757732). This antibody is specific to GIPC1 with a band at 42 kDa (PMID: 18721486).

Storage

Storage:

Store at -80°C.

Storage Buffer:

PBS only, pH7.3

For technical support and original validation data for this product please contact:

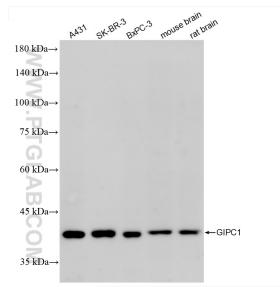
T: 1 (888) 4PTGLAB (1-888-478-4522) (toll free in USA), or 1(312) 455-8498 (outside USA)

E: proteintech@ptglab.com

W: ptglab.com

This product is exclusively available under Proteintech Group brand and is not available to purchase from any other manufacturer.

Selected Validation Data



Various lysates were subjected to SDS PAGE followed by western blot with 86030-1-RR (GIPC1 antibody) at dilution of 1:5000 incubated at room temperature for 1.5 hours. This data was developed using the same antibody clone with 86030-1-PBS in a different storage buffer formulation.