

For Research Use Only

GIPC1 Recombinant antibody

Catalog Number: 86030-1-RR



Basic Information

Catalog Number: 86030-1-RR	GenBank Accession Number: BC000410	Purification Method: Protein A purification
Size: 100ul , Concentration: 1000 µg/ml by Nanodrop;	GeneID (NCBI): 10755	CloneNo.: 250445F5
Source: Rabbit	UNIPROT ID: O14908	Recommended Dilutions: WB: 1:2000-1:10000
Isotype: IgG	Full Name: GIPC PDZ domain containing family, member 1	
Immunogen Catalog Number: AG6597	Calculated MW: 36 kDa	
	Observed MW: 42 kDa	

Applications

Tested Applications: WB, ELISA	Positive Controls:
Species Specificity: human, mouse, rat	WB : A431 cells, SK-BR-3 cells, BxPC-3 cells, mouse brain tissue, rat brain tissue

Background Information

GAIP interacting protein C terminus, member 1(GIPC1), also known as PDZ domain-containing protein GIPC1, is a cytoplasmic protein that also localizes to the peripheral membrane, acting as an adaptor protein linking receptor interactions to intracellular signaling pathways, including cell cycle regulation, and expression has been associated with some cancers (PMID: 19175293, 26757732). This antibody is specific to GIPC1 with a band at 42 kDa (PMID: 18721486).

Storage

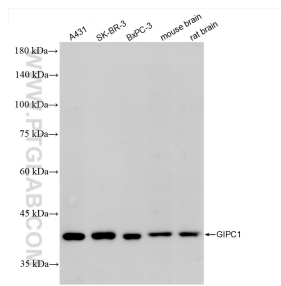
Storage:
Store at -20°C. Stable for one year after shipment.
Storage Buffer:
PBS with 0.02% sodium azide and 50% glycerol, pH7.3
Aliquoting is unnecessary for -20°C storage

*** 20ul sizes contain 0.1% BSA

For technical support and original validation data for this product please contact:
T: 1 (888) 4PTGLAB (1-888-478-4522) (toll free in USA), or 1(312) 455-8498 (outside USA)
E: proteintech@ptglab.com
W: ptglab.com

This product is exclusively available under Proteintech Group brand and is not available to purchase from any other manufacturer.

Selected Validation Data



Various lysates were subjected to SDS PAGE followed by western blot with 86030-1-RR (GIPC1 antibody) at dilution of 1:5000 incubated at room temperature for 1.5 hours.