

For Research Use Only

CHMP1B Recombinant monoclonal antibody, PBS Only (Detector)

Catalog Number:86031-2-PBS



Basic Information

Catalog Number: 86031-2-PBS	GenBank Accession Number: BC065933	Purification Method: Protein A purification
Size: 100ug , Concentration: 1 mg/ml by Nanodrop;	GeneID (NCBI): 57132	CloneNo.: 250441D5
Source: Rabbit	UNIPROT ID: Q7LBR1	
Isotype: IgG	Full Name: chromatin modifying protein 1B	
Immunogen Catalog Number: AG6222	Calculated MW: 22 kDa	

Applications

Tested Applications:
Cytometric bead array, Indirect ELISA

Species Specificity:
human

Product Information

86031-2-PBS targets CHMP1B as part of a matched antibody pair:

MP02825-1: 86031-3-PBS capture and 86031-2-PBS detection (validated in Cytometric bead array)

Unconjugated rabbit recombinant monoclonal antibody in PBS only (BSA and azide free) storage buffer at a concentration of 1 mg/mL, ready for conjugation. Created using Proteintech's proprietary in-house recombinant technology. Recombinant production enables unrivalled batch-to-batch consistency, easy scale-up, and future security of supply.

This conjugation ready format makes antibodies ideal for use in many applications including: ELISAs, multiplex assays requiring matched pairs, mass cytometry, and multiplex imaging applications. Antibody use should be optimized by the end user for each application and assay.

Storage

Storage:
Store at -80°C.

Storage Buffer:
PBS only, pH7.3

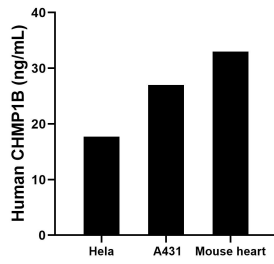
For technical support and original validation data for this product please contact:

T: 1 (888) 4PTGLAB (1-888-478-4522) (toll free in USA), or 1(312) 455-8498 (outside USA)

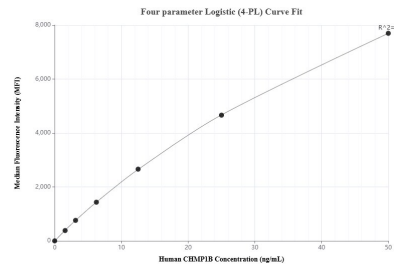
E: proteintech@ptglab.com
W: ptglab.com

This product is exclusively available under Proteintech Group brand and is not available to purchase from any other manufacturer.

Selected Validation Data



The mean CHMP1B concentration was determined to be 17.7 ng/mL in HeLa cell extract based on a 1.2 mg/mL extract load, 27.0 ng/mL in A431 cell extract based on a 1.2 mg/mL extract load, 33.0 ng/mL in mouse heart tissue extract based on a 5.4 mg/mL extract load.



Cytometric bead array standard curve of MP02825-1, CHMP1B Recombinant Matched Antibody Pair, PBS Only. Capture antibody: 86031-3-PBS. Detection antibody: 86031-2-PBS. Standard: Ag6222. Range: 1.562-50 ng/mL.