

For Research Use Only

NPC1L1 Recombinant monoclonal antibody, PBS Only (Capture)

Catalog Number:86036-2-PBS



Basic Information

Catalog Number: 86036-2-PBS	GenBank Accession Number: NM_001101648	Purification Method: Protein A purification
Size: 100ug , Concentration: 1 mg/ml by Nanodrop;	GeneID (NCBI): 29881	CloneNo.: 250613B4
Source: Rabbit	UNIPROT ID: Q9UHC9	
Isotype: IgG	Full Name: NPC1 (Niemann-Pick disease, type C1, gene)-like 1	
Immunogen Catalog Number: AG26277	Calculated MW: 149 kDa	

Applications

Tested Applications:
Sandwich ELISA, Indirect ELISA

Species Specificity:
human

Product Information

86036-2-PBS targets NPC1L1 as part of a matched antibody pair:

MP02507-1: 86036-2-PBS capture and 86036-1-PBS detection (validated in Sandwich ELISA)

Unconjugated rabbit recombinant monoclonal antibody in PBS only (BSA and azide free) storage buffer at a concentration of 1 mg/mL, ready for conjugation. Created using Proteintech's proprietary in-house recombinant technology. Recombinant production enables unrivalled batch-to-batch consistency, easy scale-up, and future security of supply.

This conjugation ready format makes antibodies ideal for use in many applications including: ELISAs, multiplex assays requiring matched pairs, mass cytometry, and multiplex imaging applications. Antibody use should be optimized by the end user for each application and assay.

Storage

Storage:
Store at -80°C.

Storage Buffer:
PBS only, pH7.3

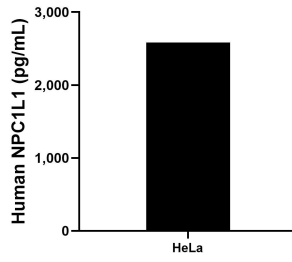
For technical support and original validation data for this product please contact:

T: 1 (888) 4PTGLAB (1-888-478-4522) (toll free in USA), or 1(312) 455-8498 (outside USA)

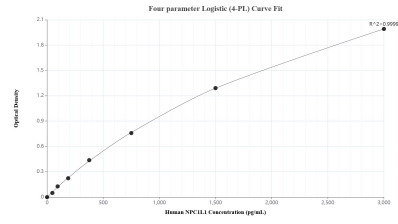
E: proteintech@ptglab.com
W: ptglab.com

This product is exclusively available under Proteintech Group brand and is not available to purchase from any other manufacturer.

Selected Validation Data



The mean NPC1L1 concentration was determined to be 2,583.8 pg/mL in HeLa cell extract based on a 1.2 mg/mL extract load.



Sandwich ELISA standard curve of MP02507-1, Human NPC1L1 Recombinant Matched Antibody Pair - PBS only. 86036-2-PBS was coated to a plate as the capture antibody and incubated with serial dilutions of standard Ag26277. 86036-1-PBS was HRP conjugated as the detection antibody. Range: 46.9-3000 pg/mL.