

For Research Use Only

# CCR3 Recombinant antibody, PBS Only

Catalog Number: 86038-1-PBS



## Basic Information

**Catalog Number:**

86038-1-PBS

**Size:**

100ug, Concentration: 1 mg/ml by Nanodrop;

**Source:**

Rabbit

**Isotype:**

IgG

**GenBank Accession Number:**

BC110297

**GeneID (NCBI):**

1232

**UNIPROT ID:**

P51677

**Full Name:**

chemokine (C-C motif) receptor 3

**Calculated MW:**

355 aa, 41 kDa

**Observed MW:**

53 kDa

**Purification Method:**

Protein A purification

**CloneNo.:**

250209D5

## Applications

**Tested Applications:**

WB, IF/ICC, Indirect ELISA

**Species Specificity:**

human

## Background Information

CCR3 (C-C Motif Chemokine Receptor 3), also known as CD193, is a G protein-coupled receptor (GPCR) primarily involved in immune cell trafficking and inflammation regulation and highly expressed in eosinophils and basophils, with detectable levels in Th2 cells, airway epithelial cells, and subsets of monocyte-derived dendritic cells (PMID: 21077277). Ligand-induced CCR3 internalization is required for eosinophil shape change and actin polymerization but not for calcium mobilization or desensitization (PMID: 12532103).

## Storage

**Storage:**

Store at -80°C.

**Storage Buffer:**

PBS only, pH7.3

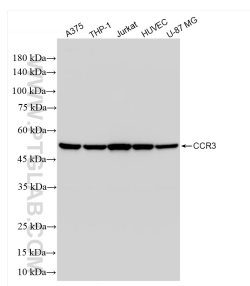
For technical support and original validation data for this product please contact:

T: 1 (888) 4PTGLAB (1-888-478-4522) (toll free in USA), or 1(312) 455-8498 (outside USA)

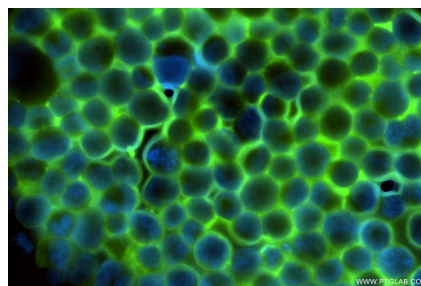
E: [proteintech@ptglab.com](mailto:proteintech@ptglab.com)  
W: [ptglab.com](http://ptglab.com)

This product is exclusively available under Proteintech Group brand and is not available to purchase from any other manufacturer.

## Selected Validation Data



Various lysates were subjected to SDS PAGE followed by western blot with 86038-1-RR (CCR3 antibody) at dilution of 1:2000 incubated at room temperature for 1.5 hours. This data was developed using the same antibody clone with 86038-1-PBS in a different storage buffer formulation.



Immunofluorescent analysis of (4% PFA) fixed K-562 cells using CCR3 antibody (86038-1-RR, Clone: 250209D5 ) at dilution of 1:500 and CoraLite® 488-Conjugated Goat Anti-Rabbit IgG(H+L) (SA00013-2). This data was developed using the same antibody clone with 86038-1-PBS in a different storage buffer formulation.