

For Research Use Only

CCR3 Recombinant antibody

Catalog Number: 86038-1-RR



Basic Information

Catalog Number: 86038-1-RR	GenBank Accession Number: BC110297	Purification Method: Protein A purification
Size: 100ul , Concentration: 1000 µg/ml by Nanodrop;	GeneID (NCBI): 1232	CloneNo.: 250209D5
Source: Rabbit	UNIPROT ID: P51677	Recommended Dilutions: WB: 1:1000-1:4000 IF/ICC: 1:250-1:1000
Isotype: IgG	Full Name: chemokine (C-C motif) receptor 3	
	Calculated MW: 355 aa, 41 kDa	
	Observed MW: 53 kDa	

Applications

Tested Applications: WB, IF/ICC, ELISA	Positive Controls:
Species Specificity: human	WB : A375 cells, THP-1 cells, Jurkat cells, HUVEC cells, U-87 MG cells IF/ICC : K-562 cells,

Background Information

CCR3 (C-C Motif Chemokine Receptor 3), also known as CD193, is a G protein-coupled receptor (GPCR) primarily involved in immune cell trafficking and inflammation regulation and highly expressed in eosinophils and basophils, with detectable levels in Th2 cells, airway epithelial cells, and subsets of monocyte-derived dendritic cells (PMID: 21077277). Ligand-induced CCR3 internalization is required for eosinophil shape change and actin polymerization but not for calcium mobilization or desensitization (PMID: 12532103).

Storage

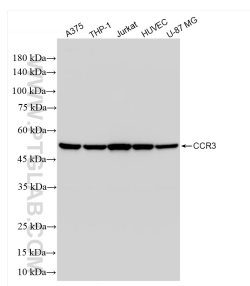
Storage:
Store at -20°C. Stable for one year after shipment.
Storage Buffer:
PBS with 0.02% sodium azide and 50% glycerol, pH7.3
Aliquoting is unnecessary for -20°C storage

*** 20ul sizes contain 0.1% BSA

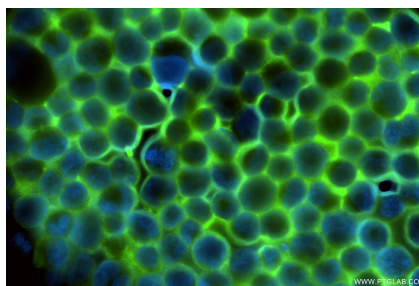
For technical support and original validation data for this product please contact:
T: 1 (888) 4PTGLAB (1-888-478-4522) (toll free in USA), or 1(312) 455-8498 (outside USA)
E: proteintech@ptglab.com
W: ptglab.com

This product is exclusively available under Proteintech Group brand and is not available to purchase from any other manufacturer.

Selected Validation Data



Various lysates were subjected to SDS PAGE followed by western blot with 86038-1-RR (CCR3 antibody) at dilution of 1:2000 incubated at room temperature for 1.5 hours.



Immunofluorescent analysis of (4% PFA) fixed K-562 cells using CCR3 antibody (86038-1-RR, Clone: 250209D5) at dilution of 1:500 and CoraLite® 488-Conjugated Goat Anti-Rabbit IgG(H+L) (SA00013-2).