

For Research Use Only

Mouse LCAT Recombinant monoclonal antibody, PBS Only (Detector)

Catalog Number: 86041-1-PBS



Basic Information

Catalog Number: 86041-1-PBS	GenBank Accession Number: NM_008490.2	Purification Method: Protein A purification
Size: 100ug, Concentration: 1 mg/ml by Nanodrop;	GeneID (NCBI): 16816	CloneNo.: 250320E2
Source: Rabbit	UNIPROT ID: P16301	
Isotype: IgG	Full Name: lecithin cholesterol acyltransferase	
Immunogen Catalog Number: EG2756	Calculated MW: 50 kDa	
	Observed MW: 55-65 kDa	

Applications

Tested Applications:
WB, IHC, Cytometric bead array, Indirect ELISA

Species Specificity:
mouse, rat

Product Information

86041-1-PBS targets LCAT as part of a matched antibody pair:

MP02258-1: 86041-2-PBS capture and 86041-1-PBS detection (validated in Cytometric bead array)

Unconjugated rabbit recombinant monoclonal antibody in PBS only (BSA and azide free) storage buffer at a concentration of 1 mg/mL, ready for conjugation. Created using Proteintech's proprietary in-house recombinant technology. Recombinant production enables unrivalled batch-to-batch consistency, easy scale-up, and future security of supply.

This conjugation ready format makes antibodies ideal for use in many applications including: ELISAs, multiplex assays requiring matched pairs, mass cytometry, and multiplex imaging applications. Antibody use should be optimized by the end user for each application and assay.

Background Information

LCAT (Lecithin-cholesterol acyltransferase) is a lipoprotein-associated enzyme responsible for the synthesis of most of the plasma cholesteryl esters (CE), and as a consequence, for the maturation of high density-lipoproteins (HDL). LCAT is a 416 amino acid protein that binds to lipoproteins or is present in lipid-free form in plasma and is secreted by the liver in humans (PMID: 34256778, 26607351). Both mice and rabbits transgenic for human LCAT have marked increases in plasma HDL cholesterol and apolipoprotein (apo) A-I levels (PMID: 9054454).

Storage

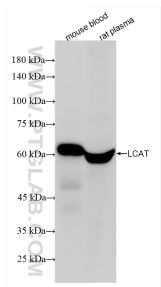
Storage:
Store at -80°C.

Storage Buffer:
PBS only, pH7.3

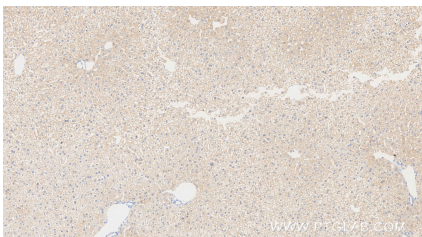
For technical support and original validation data for this product please contact:
T: 1 (888) 4PTGLAB (1-888-478-4522) (toll free in USA), or 1(312) 455-8498 (outside USA)
E: proteintech@ptglab.com
W: ptglab.com

This product is exclusively available under Proteintech Group brand and is not available to purchase from any other manufacturer.

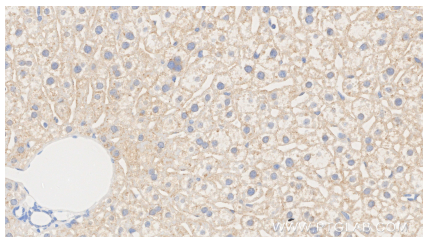
Selected Validation Data



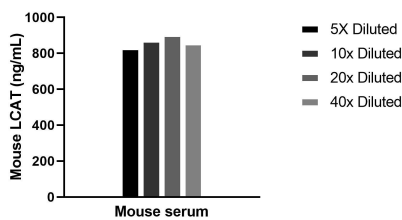
Various lysates were subjected to SDS PAGE followed by western blot with 86041-1-RR (LCAT antibody) at dilution of 1:5000 incubated at room temperature for 1.5 hours. This data was developed using the same antibody clone with 86041-1-PBS in a different storage buffer formulation.



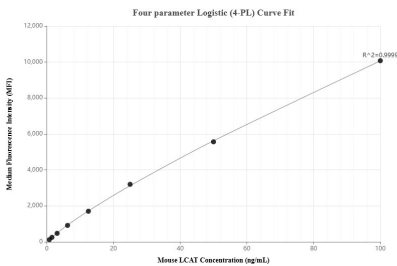
Immunohistochemical analysis of paraffin-embedded mouse liver tissue slide using 86041-1-RR (LCAT antibody) at dilution of 1:1000 (under 10x lens). Heat mediated antigen retrieval with Tris-EDTA buffer (pH 9.0). This data was developed using the same antibody clone with 86041-1-PBS in a different storage buffer formulation.



Immunohistochemical analysis of paraffin-embedded mouse liver tissue slide using 86041-1-RR (LCAT antibody) at dilution of 1:1000 (under 40x lens). Heat mediated antigen retrieval with Tris-EDTA buffer (pH 9.0). This data was developed using the same antibody clone with 86041-1-PBS in a different storage buffer formulation.



The mean LCAT concentration was determined to be 863.3 ng/mL in mouse serum.



Cytometric bead array standard curve of MP02258-1, MOUSE LCAT Recombinant Matched Antibody Pair, PBS Only. Capture antibody: 86041-2-PBS. Detection antibody: 86041-1-PBS. Standard: Eg2756. Range: 0.781-100 ng/mL.