

For Research Use Only

Mouse Lcat Recombinant antibody, PBS Only (Capture)

Catalog Number: 86041-2-PBS



Basic Information

Catalog Number: 86041-2-PBS	GenBank Accession Number: NM_008490.2	Purification Method: Protein A purification
Size: 100ug , Concentration: 1 mg/ml by Nanodrop;	GeneID (NCBI): 16816	CloneNo.: 250320A5
Source: Rabbit	UNIPROT ID: P16301	
Isotype: IgG	Full Name: lecithin cholesterol acyltransferase	
Immunogen Catalog Number: EG2756	Calculated MW: 50 kDa	

Applications

Tested Applications:
Cytometric bead array, Indirect ELISA, Sample test

Species Specificity:
mouse

Product Information

86041-2-PBS targets Lcat as part of a matched antibody pair:

MP02258-1: 86041-2-PBS capture and 86041-1-PBS detection (validated in Cytometric bead array)

Unconjugated rabbit recombinant monoclonal antibody in PBS only (BSA and azide free) storage buffer at a concentration of 1 mg/mL, ready for conjugation. Created using Proteintech's proprietary in-house recombinant technology. Recombinant production enables unrivalled batch-to-batch consistency, easy scale-up, and future security of supply.

This conjugation ready format makes antibodies ideal for use in many applications including: ELISAs, multiplex assays requiring matched pairs, mass cytometry, and multiplex imaging applications. Antibody use should be optimized by the end user for each application and assay.

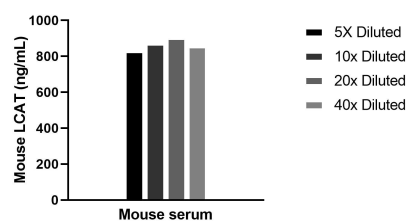
Storage

Storage:
Store at -80°C.
Storage Buffer:
PBS only, pH7.3

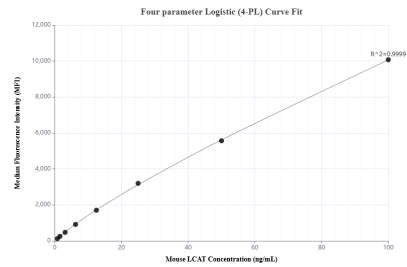
For technical support and original validation data for this product please contact:
T: 1 (888) 4PTGLAB (1-888-478-4522) (toll free in USA), or 1(312) 455-8498 (outside USA)
E: proteintech@ptglab.com
W: ptglab.com

This product is exclusively available under Proteintech Group brand and is not available to purchase from any other manufacturer.

Selected Validation Data



The mean LCAT concentration was determined to be 863.3 ng/mL in mouse serum.



Cytometric bead array standard curve of MP02258-1, MOUSE LCAT Recombinant Matched Antibody Pair, PBS Only. Capture antibody: 86041-2-PBS. Detection antibody: 86041-1-PBS. Standard: Eg2756. Range: 0.781-100 ng/mL