

For Research Use Only

SERPINF2 Recombinant antibody, PBS Only (Detector)

Catalog Number: 86042-1-PBS



Basic Information

Catalog Number: 86042-1-PBS	GenBank Accession Number: NM_000934.4	Purification Method: Protein A purification
Size: 100ug, Concentration: 1 mg/ml by Nanodrop;	GeneID (NCBI): 5345	CloneNo.: 250548E2
Source: Rabbit	UNIPROT ID: P08697-1	
Isotype: IgG	Full Name: serpin peptidase inhibitor, clade F (alpha-2 antiplasmin, pigment epithelium derived factor), member 2	
Immunogen Catalog Number: EG3041	Calculated MW: 55 kDa	

Applications

Tested Applications:
Cytometric bead array, Indirect ELISA, Sample test

Species Specificity:
human

Product Information

86042-1-PBS targets SERPINF2 as part of a matched antibody pair:

MP02257-1: 86042-2-PBS capture and 86042-1-PBS detection (validated in Cytometric bead array)

Unconjugated rabbit recombinant monoclonal antibody in PBS only (BSA and azide free) storage buffer at a concentration of 1 mg/mL, ready for conjugation. Created using Proteintech's proprietary in-house recombinant technology. Recombinant production enables unrivalled batch-to-batch consistency, easy scale-up, and future security of supply.

This conjugation ready format makes antibodies ideal for use in many applications including: ELISAs, multiplex assays requiring matched pairs, mass cytometry, and multiplex imaging applications. Antibody use should be optimized by the end user for each application and assay.

Storage

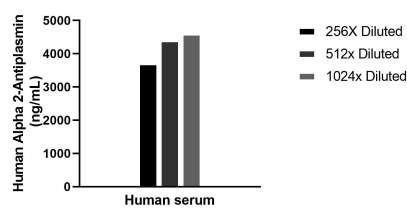
Storage:
Store at -80°C.

Storage Buffer:
PBS only, pH7.3

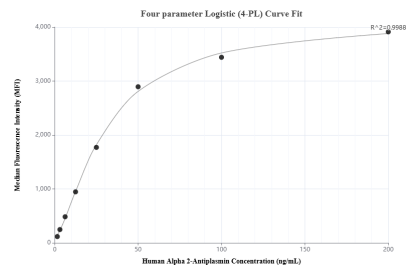
For technical support and original validation data for this product please contact:
T: 1 (888) 4PTGLAB (1-888-478-4522) (toll free in USA), or 1(312) 455-8498 (outside USA)
E: proteintech@ptglab.com
W: ptglab.com

This product is exclusively available under Proteintech Group brand and is not available to purchase from any other manufacturer.

Selected Validation Data



The mean Alpha 2-Antiplasmin concentration was determined to be 4232.6 ng/mL in human serum.



Cytometric bead array standard curve of MP02257-1, Alpha 2-Antiplasmin Recombinant Matched Antibody Pair, PBS Only. Capture antibody: 86042-2-PBS. Detection antibody: 86042-1-PBS. Standard: Eg3041. Range: 1.563-200 ng/mL.