

For Research Use Only

Alpha 2-Antiplasmin Recombinant antibody, PBS Only

Catalog Number: 86042-3-PBS



Basic Information

Catalog Number:

86042-3-PBS

Size:

100ug, Concentration: 1 mg/ml by Nanodrop;

Source:

Rabbit

Isotype:

IgG

Immunogen Catalog Number:

EG3041

GenBank Accession Number:

NM_000934.4

GeneID (NCBI):

5345

UNIPROT ID:

P08697-1

Full Name:

serpin peptidase inhibitor, clade F (alpha-2 antiplasmin, pigment epithelium derived factor), member 2

Calculated MW:

55 kDa

Observed MW:

55-60 kDa

Purification Method:

Protein A purification

CloneNo.:

250548D8

Applications

Tested Applications:

WB, Indirect ELISA

Species Specificity:

human, mouse

Background Information

SERPINF2, also termed Alpha-2-antiplasmin(a2-AP), a member of the serpin family of serine protease inhibitors. SERPINF2 is a major inhibitor of plasmin, which degrades fibrin and various other proteins. Consequently, the proper function of this gene has a major role in regulating the blood clotting pathway. Mutations in SERPINF2 result in alpha-2-plasmin inhibitor deficiency, which is characterized by severe hemorrhagic diathesis.

Storage

Storage:

Store at -80°C.

Storage Buffer:

PBS only, pH7.3

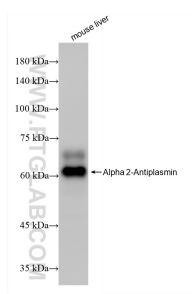
For technical support and original validation data for this product please contact:

T: 1 (888) 4PTGLAB (1-888-478-4522) (toll free in USA), or 1(312) 455-8498 (outside USA)

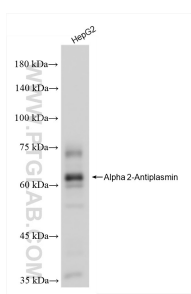
E: proteintech@ptglab.com
W: ptglab.com

This product is exclusively available under Proteintech Group brand and is not available to purchase from any other manufacturer.

Selected Validation Data



Various lysates were subjected to SDS PAGE followed by western blot with 86042-3-RR (Alpha 2-Antiplasmin antibody) at dilution of 1:5000 incubated at room temperature for 1.5 hours. This data was developed using the same antibody clone with 86042-3-PBS in a different storage buffer formulation.



Various lysates were subjected to SDS PAGE followed by western blot with 86042-3-RR (Alpha 2-Antiplasmin antibody) at dilution of 1:5000 incubated at room temperature for 1.5 hours. This data was developed using the same antibody clone with 86042-3-PBS in a different storage buffer formulation.