

For Research Use Only

Alpha 2-Antiplasmin Recombinant antibody

Catalog Number: 86042-3-RR



Basic Information

Catalog Number:

86042-3-RR

Size:

100ul, Concentration: 1000 µg/ml by Nanodrop;

Source:

Rabbit

Isotype:

IgG

Immunogen Catalog Number:

EG3041

GenBank Accession Number:

NM_000934.4

GeneID (NCBI):

5345

UNIPROT ID:

P08697-1

Full Name:

serpin peptidase inhibitor, clade F (alpha-2 antiplasmin, pigment epithelium derived factor), member 2

Calculated MW:

55 kDa

Observed MW:

55-60 kDa

Purification Method:

Protein A purification

CloneNo.:

250548D8

Recommended Dilutions:

WB: 1:2000-1:10000

Applications

Tested Applications:

WB, ELISA

Species Specificity:

human, mouse

Positive Controls:

WB : mouse liver tissue, HepG2 cells

Background Information

SERPINF2, also termed Alpha-2-antiplasmin(a2-AP), a member of the serpin family of serine protease inhibitors. SERPINF2 is a major inhibitor of plasmin, which degrades fibrin and various other proteins. Consequently, the proper function of this gene has a major role in regulating the blood clotting pathway. Mutations in SERPINF2 result in alpha-2-plasmin inhibitor deficiency, which is characterized by severe hemorrhagic diathesis.

Storage

Storage:

Store at -20°C. Stable for one year after shipment.

Storage Buffer:

PBS with 0.02% sodium azide and 50% glycerol, pH7.3

Aliquoting is unnecessary for -20°C storage

*** 20ul sizes contain 0.1% BSA

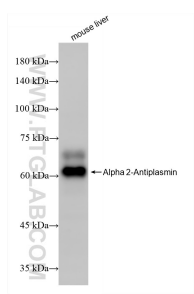
For technical support and original validation data for this product please contact:

T: 1 (888) 4PTGLAB (1-888-478-4522) (toll free in USA), or 1(312) 455-8498 (outside USA)

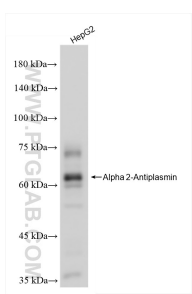
E: proteintech@ptglab.com
W: ptglab.com

This product is exclusively available under Proteintech Group brand and is not available to purchase from any other manufacturer.

Selected Validation Data



Various lysates were subjected to SDS PAGE followed by western blot with 86042-3-RR (Alpha 2-Antiplasmin antibody) at dilution of 1:5000 incubated at room temperature for 1.5 hours.



Various lysates were subjected to SDS PAGE followed by western blot with 86042-3-RR (Alpha 2-Antiplasmin antibody) at dilution of 1:5000 incubated at room temperature for 1.5 hours.