

For Research Use Only

Mouse PSAP Recombinant antibody, PBS Only (Capture)

Catalog Number: 86043-2-PBS



Basic Information

Catalog Number: 86043-2-PBS	GenBank Accession Number: NM_011179.3	Purification Method: Protein A purification
Size: 100ug , Concentration: 1 mg/ml by Nanodrop;	GeneID (NCBI): 19156	CloneNo.: 250312D3
Source: Rabbit	UNIPROT ID: NP_035309.3	
Isotype: IgG	Full Name: prosaposin	
Immunogen Catalog Number: EG3155	Calculated MW: 61 kDa	
	Observed MW: 65-70 kDa	

Applications

Tested Applications:
WB, IF/ICC, Cytometric bead array, Indirect ELISA, Sample test

Species Specificity:
mouse

Product Information

86043-2-PBS targets PSAP as part of a matched antibody pair:

MP02256-1: 86043-2-PBS capture and 86043-1-PBS detection (validated in Cytometric bead array)

Unconjugated rabbit recombinant monoclonal antibody in PBS only (BSA and azide free) storage buffer at a concentration of 1 mg/mL, ready for conjugation. Created using Proteintech's proprietary in-house recombinant technology. Recombinant production enables unrivalled batch-to-batch consistency, easy scale-up, and future security of supply.

This conjugation ready format makes antibodies ideal for use in many applications including: ELISAs, multiplex assays requiring matched pairs, mass cytometry, and multiplex imaging applications. Antibody use should be optimized by the end user for each application and assay.

Background Information

Prosaposin (PSAP) is also named as Sulfated glycoprotein 1 (SGP-1). PSAP is a secreted neurotrophic factor and a lysosomal protein serving as the precursor of saposins (A-D), which are cofactors for hydrolases of sphingolipids (PMID: 25130661, PMID: 31220974). PSAP modulates glycosphingolipid metabolism and variants have been linked to Parkinson's disease (PD) (PMID: 37726325). As a dual-function protein, PSAP is a lysosome-associated protein that participates in a variety of cellular processes. In the lysosome, PSAP is processed to activate enzymes that degrade lipids. PSAP proteins located extracellularly are involved in cancer progression, such as proliferation and tumor death suppression signaling (PMID: 39405903). Prosaposin (PSAP) has two forms: a precursor and a secreted form. The secreted form has neurotrophic, myelinotrophic, and myotrophic properties. The precursor form is a precursor protein of saposins A-D (PMID: 33242172). Both human and mouse prosaposin are 65-70 kDa proteins cleaved in the lysosomes into four 10-15 kDa proteins designated saposins A, B, C and D (PMID: 8573994). Sulfated glycoprotein-1 (prosaposin) exists in 2 forms: a 65 kDa form targeted to lysosomes and a post-translationally modified to the 70 kDa form secreted extracellularly (PMID: 8593668).

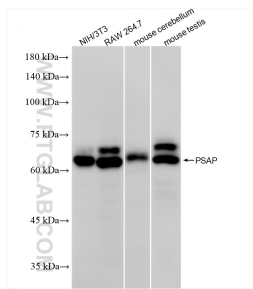
Storage

Storage:
Store at -80°C.
Storage Buffer:
PBS only, pH7.3

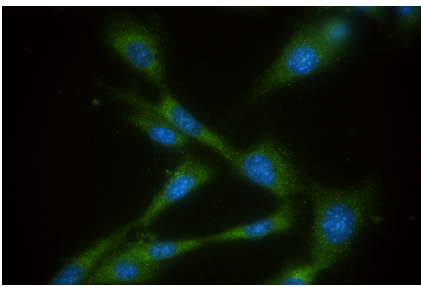
For technical support and original validation data for this product please contact:
T: 1 (888) 4PTGLAB (1-888-478-4522) (toll free in USA), or 1(312) 455-8498 (outside USA)
E: proteintech@ptglab.com
W: ptglab.com

This product is exclusively available under Proteintech Group brand and is not available to purchase from any other manufacturer.

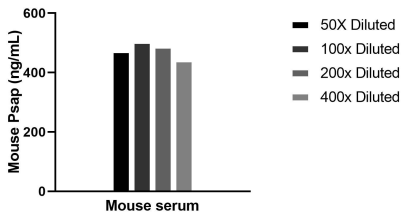
Selected Validation Data



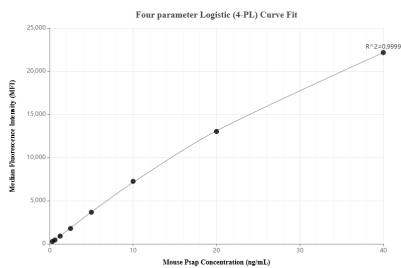
Various lysates were subjected to SDS PAGE followed by western blot with 86043-2-RR (Psap antibody) at dilution of 1:5000 incubated at room temperature for 1.5 hours. This data was developed using the same antibody clone with 86043-2-PBS in a different storage buffer formulation.



Immunofluorescent analysis of (-20°C Ethanol) fixed NIH/3T3 cells using PSAP antibody (86043-2-RR, Clone: 250312D3) at dilution of 1:400 and CoraLite® 488-Conjugated Goat Anti-Rabbit IgG(H+L) (SA00013-2). This data was developed using the same antibody clone with 86043-2-PBS in a different storage buffer formulation.



The mean Psap concentration was determined to be 491.7 ng/mL in mouse serum.



Cytometric bead array standard curve of MP02256-1, MOUSE Psap Recombinant Matched Antibody Pair, PBS Only. Capture antibody: 86043-2-PBS. Detection antibody: 86043-1-PBS. Standard: Eg3155. Range: 0.313-40 ng/mL.