

For Research Use Only

IRF2BP1 Recombinant antibody, PBS Only (Detector)

Catalog Number: 86048-2-PBS



Basic Information

Catalog Number: 86048-2-PBS	GenBank Accession Number: BC038222	Purification Method: Protein A purification
Size: 100ug, Concentration: 1 mg/ml by Nanodrop;	GeneID (NCBI): 26145	CloneNo.: 250630G11
Source: Rabbit	UNIPROT ID: Q8IU81	
Isotype: IgG	Full Name: interferon regulatory factor 2 binding protein 1	
Immunogen Catalog Number: AG4596	Calculated MW: 584 aa, 62 kDa	

Applications

Tested Applications:
Cytometric bead array, Sandwich ELISA, Indirect ELISA, Sample test

Species Specificity:
human

Product Information

86048-2-PBS targets IRF2BP1 as part of a matched antibody pair:

MP02247-1: 86048-3-PBS capture and 86048-2-PBS detection (validated in Cytometric bead array)

MP02247-2: 86048-4-PBS capture and 86048-2-PBS detection (validated in Sandwich ELISA)

Unconjugated rabbit recombinant monoclonal antibody in PBS only (BSA and azide free) storage buffer at a concentration of 1 mg/mL, ready for conjugation. Created using Proteintech's proprietary in-house recombinant technology. Recombinant production enables unrivalled batch-to-batch consistency, easy scale-up, and future security of supply.

This conjugation ready format makes antibodies ideal for use in many applications including: ELISAs, multiplex assays requiring matched pairs, mass cytometry, and multiplex imaging applications. Antibody use should be optimized by the end user for each application and assay.

Storage

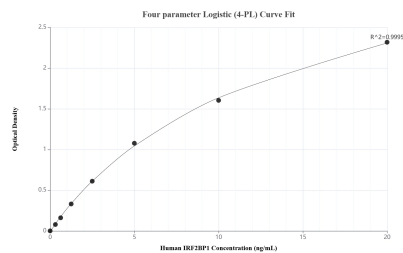
Storage:
Store at -80°C.

Storage Buffer:
PBS only, pH7.3

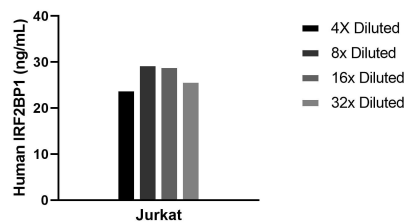
For technical support and original validation data for this product please contact:
T: 1 (888) 4PTGLAB (1-888-478-4522) (toll free in USA), or 1(312) 455-8498 (outside USA)
E: proteintech@ptglab.com
W: ptglab.com

This product is exclusively available under Proteintech Group brand and is not available to purchase from any other manufacturer.

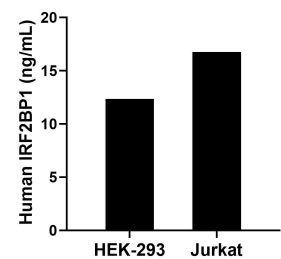
Selected Validation Data



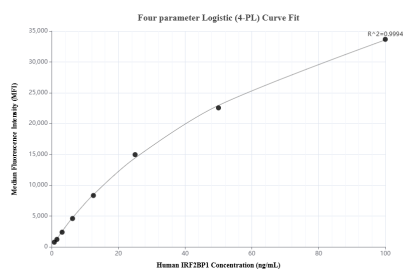
Sandwich ELISA standard curve of MP02247-2, Human IRF2BP1 Recombinant Matched Antibody Pair - PBS only. 86048-4-PBS was coated to a plate as the capture antibody and incubated with serial dilutions of standard Ag4596. 86048-2-PBS was HRP conjugated as the detection antibody. Range: 0.313-20 ng/mL



The mean IRF2BP1 concentration was determined to be 27.1 ng/mL in Jurkat cell extract based on a 2.0 mg/mL extract load.



The mean IRF2BP1 concentration was determined to be 12.35 ng/mL in HEK-293 cell extract based on a 2.20 mg/mL extract load and 16.76 ng/mL in Jurkat cell extract based on a 1.20 mg/mL extract load.



Cytometric bead array standard curve of MP02247-1, IRF2BP1 Recombinant Matched Antibody Pair, PBS Only. Capture antibody: 86048-3-PBS. Detection antibody: 86048-2-PBS. Standard: Ag4596. Range: 0.781-100 ng/mL