

For Research Use Only

SERCA2/ATP2A2 Recombinant antibody, PBS Only

Catalog Number: 86050-1-PBS



Basic Information

Catalog Number:

86050-1-PBS

Size:

100ug , Concentration: 1 mg/ml by Nanodrop;

Source:

Rabbit

Isotype:

IgG

Immunogen Catalog Number:

AG26177

GenBank Accession Number:

BC035588

GeneID (NCBI):

488

UNIPROT ID:

P16615

Full Name:

ATPase, Ca⁺⁺ transporting, cardiac muscle, slow twitch 2

Calculated MW:

1042 aa, 115 kDa

Observed MW:

110-115 kDa

Purification Method:

Protein A purification

CloneNo.:

250667D7

Applications

Tested Applications:

WB, IHC, IF/ICC, Indirect ELISA

Species Specificity:

human, mouse, rat

Background Information

ATP2A2, also known as SERCA2 (Sarco/endoplasmic reticulum-type calcium transport ATPase 2), is a 110 kDa magnesium-dependent enzyme catalyzing the hydrolysis of ATP coupled with the translocation of calcium from the cytosol to the sarcoplasmic reticulum lumen. Human SERCA2 gene gives rise to several alternatively spliced isoforms: SERCA2a, SERCA2b and SERCA2c. ATP2A2 is mainly expressed in the sarcoplasmic reticulum of muscle cells and the endoplasmic reticulum of most cell types.

Storage

Storage:

Store at -80°C.

Storage Buffer:

PBS only, pH7.3

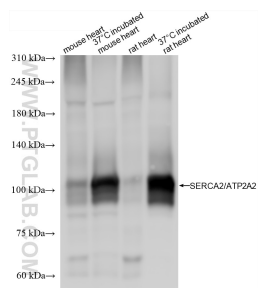
For technical support and original validation data for this product please contact:

T: 1 (888) 4PTGLAB (1-888-478-4522) (toll free in USA), or 1(312) 455-8498 (outside USA)

E: proteintech@ptglab.com
W: ptglab.com

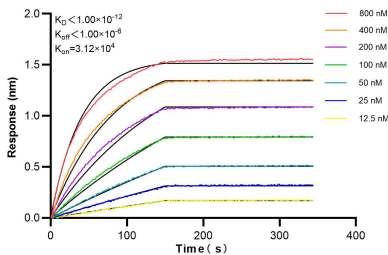
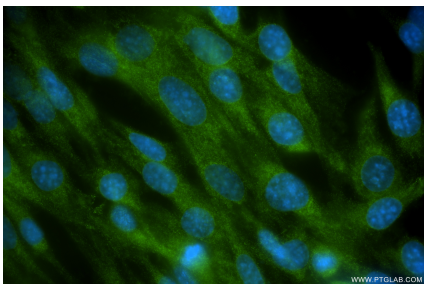
This product is exclusively available under Proteintech Group brand and is not available to purchase from any other manufacturer.

Selected Validation Data



Various lysates were subjected to SDS PAGE followed by western blot with 86050-1-RR (SERCA2,ATP2A2 antibody) at dilution of 1:5000 incubated at room temperature for 1.5 hours. This data was developed using the same antibody clone with 86050-1-PBS in a different storage buffer formulation.

Immunohistochemical analysis of paraffin-embedded mouse skeletal muscle tissue slide using 86050-1-RR (SERCA2/ATP2A2 antibody) at dilution of 1:800 (under 20x lens). Heat mediated antigen retrieval with Tris-EDTA buffer (pH 9.0). This data was developed using the same antibody clone with 86050-1-PBS in a different storage buffer formulation.



Biolayer interferometry (BLI) kinetic assays of 86050-1-RR against Human SERCA2/ATP2A2 were performed. The affinity constant is below 1 pM.