

For Research Use Only

# PRIM1 Recombinant antibody

Catalog Number: 86051-1-RR



## Basic Information

**Catalog Number:**

86051-1-RR

**Size:**

100ul , Concentration: 1000 µg/ml by Nanodrop;

**Source:**

Rabbit

**Isotype:**

IgG

**Immunogen Catalog Number:**

AG1124

**GenBank Accession Number:**

BC005266

**GeneID (NCBI):**

5557

**UNIPROT ID:**

P49642

**Full Name:**

primase, DNA, polypeptide 1 (49kDa)

**Calculated MW:**

50 kDa

**Observed MW:**

50 kDa

**Purification Method:**

Protein A purification

**CloneNo.:**

250690B8

**Recommended Dilutions:**

WB: 1:2000-1:10000

## Applications

**Tested Applications:**

WB, ELISA

**Species Specificity:**

human, mouse

**Positive Controls:**

WB : HeLa cells, HepG2 cells, Jurkat cells, K-562 cells, Sp2/O cells, MIH/3T3 cells

## Background Information

DNA replication in human cells is initiated by a complex apparatus containing a DNA polymerase-alpha/primase complex. Primase synthesizes oligoribonucleotides that serve as primers for the initiation of DNA synthesis. It plays a role in both the initiation of DNA replication and the synthesis of Okazaki fragments for lagging strand synthesis. PRIM1 is a subunit of this complex.

## Storage

**Storage:**

Store at -20°C. Stable for one year after shipment.

**Storage Buffer:**

PBS with 0.02% sodium azide and 50% glycerol, pH7.3

Aliquoting is unnecessary for -20°C storage

\*\*\* 20ul sizes contain 0.1% BSA

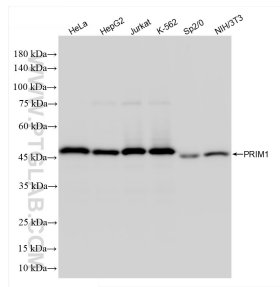
For technical support and original validation data for this product please contact:

T: 1 (888) 4PTGLAB (1-888-478-4522) (toll free in USA), or 1(312) 455-8498 (outside USA)

E: [proteintech@ptglab.com](mailto:proteintech@ptglab.com)  
W: [ptglab.com](http://ptglab.com)

This product is exclusively available under Proteintech Group brand and is not available to purchase from any other manufacturer.

## Selected Validation Data



Various lysates were subjected to SDS PAGE followed by western blot with 86051-1-RR (PRIM1 antibody) at dilution of 1:5000 incubated at room temperature for 1.5 hours.