

For Research Use Only

# Napsin A Recombinant antibody

Catalog Number: 86052-1-RR



## Basic Information

|  |  |   |
|--|--|---|
| <b>Catalog Number:</b><br>86052-1-RR                           | <b>GenBank Accession Number:</b><br>BC017842     | <b>Purification Method:</b><br>Protein A purification |
| <b>Size:</b><br>100ul , Concentration: 1000 µg/ml by Nanodrop; | <b>GeneID (NCBI):</b><br>9476                    | <b>CloneNo.:</b><br>242433D1                          |
| <b>Source:</b><br>Rabbit                                       | <b>UNIPROT ID:</b><br>O96009                     | <b>Recommended Dilutions:</b><br>WB: 1:1000-1:6000    |
| <b>Isotype:</b><br>IgG   | <b>Full Name:</b><br>napsin A aspartic peptidase |   |
| <b>Immunogen Catalog Number:</b><br>AG9721                     | <b>Calculated MW:</b><br>420 aa, 45 kDa          |   |
|  | <b>Observed MW:</b><br>40-45 kDa                 |   |

## Applications

|  |  |
|--|--|
| <b>Tested Applications:</b><br>WB, ELISA | <b>Positive Controls:</b><br>WB : A549 cells, K-562 cells, human kidney tissue |
| <b>Species Specificity:</b><br>human     |  |

## Background Information

Napsin is found in two isoforms, napsin A and B, with highly homologous nucleotide sequences (91.2%). Napsin A appears to be a functional proteinase, predominantly expressed in lung and kidney. Napsin B is transcribed exclusively in cells related to the immune system and lacks an in-frame stop codon and is believed to be a pseudogene.(PMID:12698189). Napsin A is superior to TTF-1 in distinguishing primary lung ACA from other carcinomas (except kidney), particularly primary lung small cell carcinoma, and primary thyroid carcinoma. (PMID:22288963).

## Storage

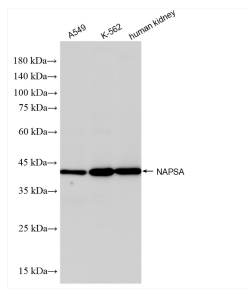
**Storage:**  
Store at -20°C. Stable for one year after shipment.  
**Storage Buffer:**  
PBS with 0.02% sodium azide and 50% glycerol, pH7.3  
**Aliquoting is unnecessary for -20°C storage**

\*\*\* 20ul sizes contain 0.1% BSA

For technical support and original validation data for this product please contact:  
T: 1 (888) 4PTGLAB (1-888-478-4522) (toll free in USA), or 1(312) 455-8498 (outside USA)  
E: proteintech@ptglab.com  
W: ptglab.com

This product is exclusively available under Proteintech Group brand and is not available to purchase from any other manufacturer.

## Selected Validation Data



Various lysates were subjected to SDS PAGE followed by western blot with 86052-1-RR (NAPSA antibody) at dilution of 1:3000 incubated at room temperature for 1.5 hours.