

For Research Use Only

# GYG1 Recombinant antibody, PBS Only

Catalog Number: 86056-1-PBS



## Basic Information

<b>Catalog Number:</b> 86056-1-PBS	<b>GenBank Accession Number:</b> BC031096	<b>Purification Method:</b> Protein A purification
<b>Size:</b> 100ug, Concentration: 1 mg/ml by Nanodrop;	<b>GeneID (NCBI):</b> 2992	<b>CloneNo.:</b> 250590C9
<b>Source:</b> Rabbit	<b>UNIPROT ID:</b> P46976	
<b>Isotype:</b> IgG	<b>Full Name:</b> glycogenin 1	
<b>Immunogen Catalog Number:</b> AG3583	<b>Calculated MW:</b> 350 aa, 39 kDa	
	<b>Observed MW:</b> 39 kDa	

## Applications

**Tested Applications:**  
WB, Indirect ELISA

**Species Specificity:**  
human

## Background Information

The GYG1 gene encodes glycogenin-1, a core protein in muscle glycogen particles. GYG1 is a glycosyltransferase that forms a short glucose polymer of approximately 10 glucose residues by autoglucosylation (PMID: 25272951). Cardiomyopathy and muscle weakness associated with muscle glycogen depletion can also be caused by impaired priming of glycogen synthesis due to inactivation of muscle glycogenin (glycogenin-1) (PMID: 20357282).

## Storage

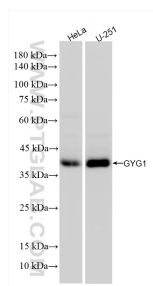
**Storage:**  
Store at -80°C.

**Storage Buffer:**  
PBS only, pH7.3

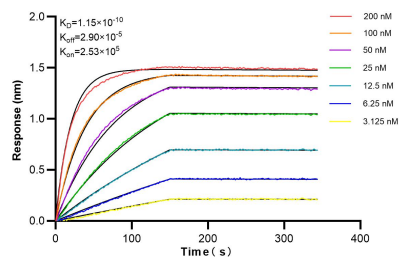
For technical support and original validation data for this product please contact:  
T: 1 (888) 4PTGLAB (1-888-478-4522) (toll free in USA), or 1(312) 455-8498 (outside USA)  
E: [proteintech@ptglab.com](mailto:proteintech@ptglab.com)  
W: [ptglab.com](http://ptglab.com)

This product is exclusively available under Proteintech Group brand and is not available to purchase from any other manufacturer.

## Selected Validation Data



Various lysates were subjected to SDS PAGE followed by western blot with 86056-1-RR (GYG1 antibody) at dilution of 1:3000 incubated at room temperature for 1.5 hours. This data was developed using the same antibody clone with 86056-1-PBS in a different storage buffer formulation.



Biolayer interferometry (BLI) kinetic assays of 86056-1-RR against Human GYG1 were performed. The affinity constant is 0.115 nM.