

For Research Use Only

GYG1 Recombinant antibody

Catalog Number: 86056-1-RR



Basic Information

Catalog Number: 86056-1-RR	GenBank Accession Number: BC031096	Purification Method: Protein A purification
Size: 100ul , Concentration: 1000 µg/ml by Nanodrop;	GeneID (NCBI): 2992	CloneNo.: 250590C9
Source: Rabbit	UNIPROT ID: P46976	Recommended Dilutions: WB: 1:1000-1:6000
Isotype: IgG	Full Name: glycogenin 1	
Immunogen Catalog Number: AG3583	Calculated MW: 350 aa, 39 kDa	
	Observed MW: 39 kDa	

Applications

Tested Applications: WB, ELISA	Positive Controls: WB : HeLa cells, U-251 cells
Species Specificity: human	

Background Information

The GYG1 gene encodes glycogenin-1, a core protein in muscle glycogen particles. GYG1 is a glycosyltransferase that forms a short glucose polymer of approximately 10 glucose residues by autoglucosylation (PMID: 25272951). Cardiomyopathy and muscle weakness associated with muscle glycogen depletion can also be caused by impaired priming of glycogen synthesis due to inactivation of muscle glycogenin (glycogenin-1) (PMID: 20357282).

Storage

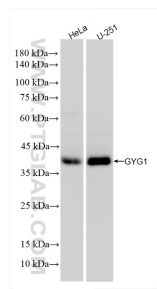
Storage:
Store at -20°C. Stable for one year after shipment.
Storage Buffer:
PBS with 0.02% sodium azide and 50% glycerol, pH7.3
Aliquoting is unnecessary for -20°C storage

*** 20ul sizes contain 0.1% BSA

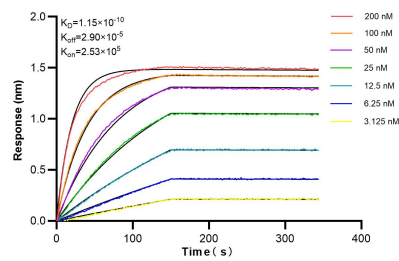
For technical support and original validation data for this product please contact:
T: 1 (888) 4PTGLAB (1-888-478-4522) (toll free in USA), or 1(312) 455-8498 (outside USA)
E: proteintech@ptglab.com
W: ptglab.com

This product is exclusively available under Proteintech Group brand and is not available to purchase from any other manufacturer.

Selected Validation Data



Various lysates were subjected to SDS PAGE followed by western blot with 86056-1-RR (GYG1 antibody) at dilution of 1:3000 incubated at room temperature for 1.5 hours.



Biolayer interferometry (BLI) kinetic assays of 86056-1-RR against Human GYG1 were performed. The affinity constant is 0.115 nM.