

For Research Use Only

LRRC32 Recombinant antibody, PBS Only (Capture)

Catalog Number: 86059-2-PBS



Basic Information

Catalog Number: 86059-2-PBS	GenBank Accession Number: BC070079	Purification Method: Protein A purification
Size: 100ug , Concentration: 1 mg/ml by Nanodrop;	GeneID (NCBI): 2615	CloneNo.: 250611B1
Source: Rabbit	UNIPROT ID: Q14392	
Isotype: IgG	Full Name: leucine rich repeat containing 32	
Immunogen Catalog Number: AG23423	Calculated MW: 72 kDa	
	Observed MW: 72-80 kDa	

Applications

Tested Applications:
WB, Sandwich ELISA, Indirect ELISA, Sample test

Species Specificity:
human

Product Information

86059-2-PBS targets LRRC32 as part of a matched antibody pair:

MP02335-1: 86059-2-PBS capture and 86059-3-PBS detection (validated in Sandwich ELISA)

Unconjugated rabbit recombinant monoclonal antibody in PBS only (BSA and azide free) storage buffer at a concentration of 1 mg/mL, ready for conjugation. Created using Proteintech's proprietary in-house recombinant technology. Recombinant production enables unrivalled batch-to-batch consistency, easy scale-up, and future security of supply.

This conjugation ready format makes antibodies ideal for use in many applications including: ELISAs, multiplex assays requiring matched pairs, mass cytometry, and multiplex imaging applications. Antibody use should be optimized by the end user for each application and assay.

Background Information

LRRC32, also known as GARP, is a transmembrane protein of 662 amino acids, the extracellular portion of which contains 20 leucine-rich repeats (PMID: 8180135). LRRC32 is a cell surface receptor on regulatory T-lymphocytes (Treg cells), platelets, hepatic stellate cells and certain cancer cells (PMID: 27054568). It has been demonstrated as a Treg-specific activation marker (PMID: 20137067). LRRC32 is critical for the surface expression of latent TGF- β by binding to the complex and functioning as its cell surface receptor (PMID: 19651619).

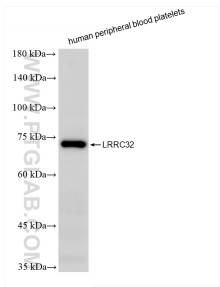
Storage

Storage:
Store at -80°C.
Storage Buffer:
PBS only, pH7.3

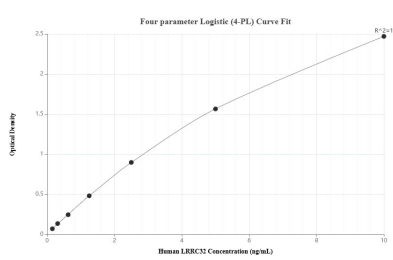
For technical support and original validation data for this product please contact:
T: 1 (888) 4PTGLAB (1-888-478-4522) (toll free in USA), or 1(312) 455-8498 (outside USA)
E: proteintech@ptglab.com
W: ptglab.com

This product is exclusively available under Proteintech Group brand and is not available to purchase from any other manufacturer.

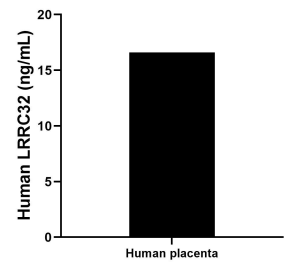
Selected Validation Data



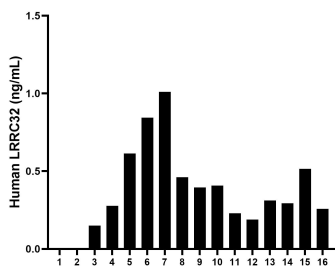
human peripheral blood platelets were subjected to SDS PAGE followed by western blot with 86059-2-RR (LRRC32 antibody) at dilution of 1:1000 incubated at room temperature for 1.5 hours. This data was developed using the same antibody clone with 86059-2-PBS in a different storage buffer formulation.



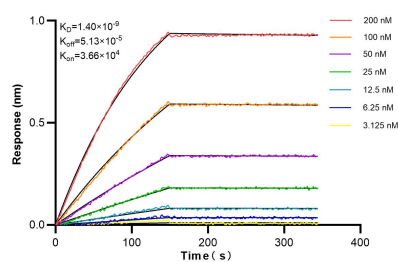
Sandwich ELISA standard curve of MP02335-1, Human LRRC32 Recombinant Matched Antibody Pair - PBS only. 86059-2-PBS was coated to a plate as the capture antibody and incubated with serial dilutions of standard Ag23423. 86059-3-PBS was HRP conjugated as the detection antibody. Range: 0.156-10 ng/mL



The mean LRRC32 concentration was determined to be 16.61 ng/mL in human placenta tissue extract based on a 3.2 mg/mL extract load.



Serum of sixteen individual healthy human donors was measured. The human LRRC32 concentration of detected samples was determined to be 0.37 ng/mL with a range of 0 - 1.01 ng/mL



Biolayer interferometry (BLI) kinetic assays of 86059-2-RR against Human LRRC32 were performed. The affinity constant is 1.40 nM.