

For Research Use Only

# LRRC32 Recombinant antibody

Catalog Number: 86059-2-RR



## Basic Information

<b>Catalog Number:</b> 86059-2-RR	<b>GenBank Accession Number:</b> BC070079	<b>Purification Method:</b> Protein A purification
<b>Size:</b> 100ul , Concentration: 1000 µg/ml by Nanodrop;	<b>GeneID (NCBI):</b> 2615	<b>CloneNo.:</b> 250611B1
<b>Source:</b> Rabbit	<b>UNIPROT ID:</b> Q14392	<b>Recommended Dilutions:</b> WB: 1:500-1:2000
<b>Isotype:</b> IgG	<b>Full Name:</b> leucine rich repeat containing 32	
<b>Immunogen Catalog Number:</b> AG23423	<b>Calculated MW:</b> 72 kDa	
	<b>Observed MW:</b> 72-80 kDa	

## Applications

<b>Tested Applications:</b> WB, ELISA	<b>Positive Controls:</b> WB : human peripheral blood platelets, HUVEC cells
<b>Species Specificity:</b> human	

## Background Information

LRRC32, also known as GARP, is a transmembrane protein of 662 amino acids, the extracellular portion of which contains 20 leucine-rich repeats (PMID: 8180135). LRRC32 is a cell surface receptor on regulatory T-lymphocytes (Treg cells), platelets, hepatic stellate cells and certain cancer cells (PMID: 27054568). It has been demonstrated as a Treg-specific activation marker (PMID: 20137067). LRRC32 is critical for the surface expression of latent TGF-β by binding to the complex and functioning as its cell surface receptor (PMID: 19651619).

## Storage

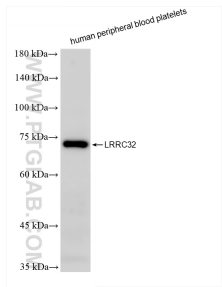
**Storage:**  
Store at -20°C. Stable for one year after shipment.  
**Storage Buffer:**  
PBS with 0.02% sodium azide and 50% glycerol, pH7.3  
**Aliquoting is unnecessary for -20°C storage**

\*\*\* 20ul sizes contain 0.1% BSA

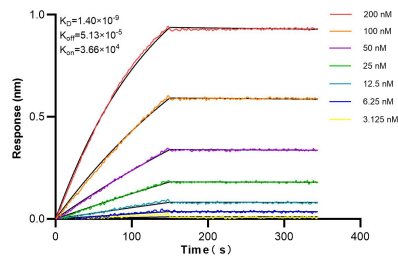
For technical support and original validation data for this product please contact:  
T: 1 (888) 4PTGLAB (1-888-478-4522) (toll free in USA), or 1(312) 455-8498 (outside USA)  
E: proteintech@ptglab.com  
W: ptglab.com

This product is exclusively available under Proteintech Group brand and is not available to purchase from any other manufacturer.

## Selected Validation Data



human peripheral blood platelets were subjected to SDS PAGE followed by western blot with 86059-2-RR (LRRRC32 antibody) at dilution of 1:1000 incubated at room temperature for 1.5 hours.



Biolayer interferometry (BLI) kinetic assays of 86059-2-RR against Human LRRRC32 were performed. The affinity constant is 1.40 nM.