

For Research Use Only

# LRRC32 Recombinant antibody, PBS Only (Detector)

Catalog Number: 86059-3-PBS



## Basic Information

<b>Catalog Number:</b> 86059-3-PBS	<b>GenBank Accession Number:</b> BC070079	<b>Purification Method:</b> Protein A purification
<b>Size:</b> 100ug , Concentration: 1 mg/ml by Nanodrop;	<b>GeneID (NCBI):</b> 2615	<b>CloneNo.:</b> 250611H4
<b>Source:</b> Rabbit	<b>UNIPROT ID:</b> Q14392	
<b>Isotype:</b> IgG	<b>Full Name:</b> leucine rich repeat containing 32	
<b>Immunogen Catalog Number:</b> AG23423	<b>Calculated MW:</b> 72 kDa	

## Applications

**Tested Applications:**  
Sandwich ELISA, Indirect ELISA, Sample test

**Species Specificity:**  
human

## Product Information

86059-3-PBS targets LRRC32 as part of a matched antibody pair:

MP02335-1: 86059-2-PBS capture and 86059-3-PBS detection (validated in Sandwich ELISA)

Unconjugated rabbit recombinant monoclonal antibody in PBS only (BSA and azide free) storage buffer at a concentration of 1 mg/mL, ready for conjugation. Created using Proteintech's proprietary in-house recombinant technology. Recombinant production enables unrivalled batch-to-batch consistency, easy scale-up, and future security of supply.

This conjugation ready format makes antibodies ideal for use in many applications including: ELISAs, multiplex assays requiring matched pairs, mass cytometry, and multiplex imaging applications. Antibody use should be optimized by the end user for each application and assay.

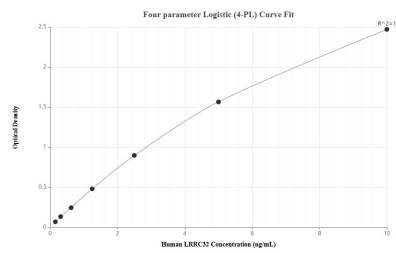
## Storage

**Storage:**  
Store at -80°C.  
**Storage Buffer:**  
PBS only, pH7.3

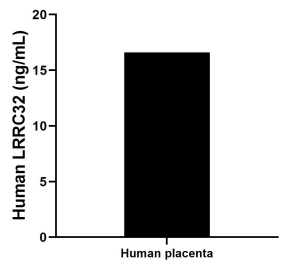
For technical support and original validation data for this product please contact:  
T: 1 (888) 4PTGLAB (1-888-478-4522) (toll free in USA), or 1(312) 455-8498 (outside USA)  
E: proteintech@ptglab.com  
W: ptglab.com

This product is exclusively available under Proteintech Group brand and is not available to purchase from any other manufacturer.

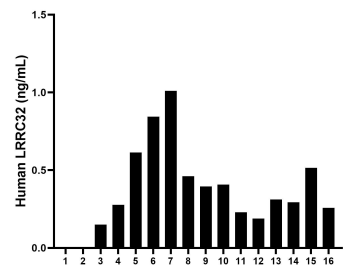
## Selected Validation Data



Sandwich ELISA standard curve of MP02335-1, Human LRRC32 Recombinant Matched Antibody Pair - PBS only. 86059-2-PBS was coated to a plate as the capture antibody and incubated with serial dilutions of standard Ag23423. 86059-3-PBS was HRP conjugated as the detection antibody. Range: 0.156-10 ng/mL



The mean LRRC32 concentration was determined to be 16.61 ng/mL in human placenta tissue extract based on a 3.2 mg/mL extract load.



Serum of sixteen individual healthy human donors was measured. The human LRRC32 concentration of detected samples was determined to be 0.37 ng/mL with a range of 0 - 1.01 ng/mL.