

For Research Use Only

PKD2L1 Recombinant antibody

Catalog Number: 86062-2-RR



Basic Information

Catalog Number:

86062-2-RR

Size:

100ul , Concentration: 1000 µg/ml by Nanodrop;

Source:

Rabbit

Isotype:

IgG

Immunogen Catalog Number:

AG3807

GenBank Accession Number:

BC025665

GeneID (NCBI):

9033

UNIPROT ID:

Q9POL9

Full Name:

polycystic kidney disease 2-like 1

Calculated MW:

805 aa, 92 kDa

Observed MW:

85-90 kDa

Purification Method:

Protein A purification

CloneNo.:

250486A10

Recommended Dilutions:

WB: 1:5000-1:50000

Applications

Tested Applications:

WB, ELISA

Species Specificity:

human, mouse

Positive Controls:

WB : A549 cells, HepG2 cells, mouse testis tissue, mouse brain tissue

Storage

Storage:

Store at -20°C. Stable for one year after shipment.

Storage Buffer:

PBS with 0.02% sodium azide and 50% glycerol, pH7.3

Aliquoting is unnecessary for -20°C storage

*** 20ul sizes contain 0.1% BSA

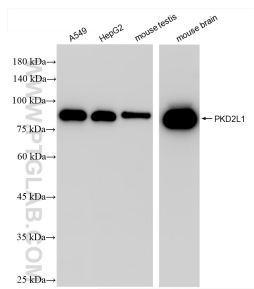
For technical support and original validation data for this product please contact:

T: 1 (888) 4PTGLAB (1-888-478-4522) (toll free in USA), or 1(312) 455-8498 (outside USA)

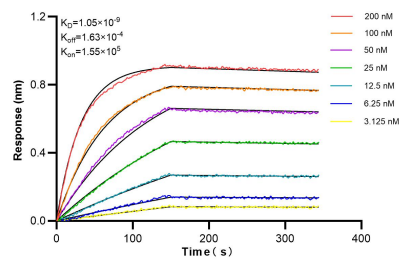
E: proteintech@ptglab.com
W: ptglab.com

This product is exclusively available under Proteintech Group brand and is not available to purchase from any other manufacturer.

Selected Validation Data



Various lysates were subjected to SDS PAGE followed by western blot with 86062-2-RR (PKD2L1 antibody) at dilution of 1:10000 incubated at room temperature for 1.5 hours.



Biolayer interferometry (BLI) kinetic assays of 86062-2-RR against Human PKD2L1 were performed. The affinity constant is 1.05 nM.