

For Research Use Only

WIBG Recombinant antibody

Catalog Number: 86064-1-RR



Basic Information

Catalog Number: 86064-1-RR	GenBank Accession Number: BC006135	Purification Method: Protein A purification
Size: 100ul , Concentration: 1000 µg/ml by Nanodrop;	GeneID (NCBI): 84305	CloneNo.: 242800G10
Source: Rabbit	UNIPROT ID: Q9BRP8	Recommended Dilutions: WB: 1:1000-1:6000 IHC: 1:200-1:800 IF/ICC: 1:200-1:800
Isotype: IgG	Full Name: within bgcn homolog (Drosophila)	
Immunogen Catalog Number: AG6276	Calculated MW: 23 kDa	
	Observed MW: 23-27 kDa	

Applications

Tested Applications:
WB, IHC, IF/ICC, ELISA

Species Specificity:
human, mouse

Note-IHC: suggested antigen retrieval with **TE buffer pH 9.0; (*) Alternatively, antigen retrieval may be performed with citrate buffer pH 6.0**

Positive Controls:

WB : A549 cells, MCF-7 cells, SH-SY5Y cells, HepG2 cells, U-251 cells, HL-60 cells, mouse thymus tissue, mouse spleen tissue

IHC : mouse colon tissue,

IF/ICC : MCF-7 cells,

Background Information

Protein WIBG homolog, also known as PYM1 (Partner of Y14 and mago), is a cytoplasmic RNA-binding protein, that can interact with the ribosome and EJC, may act as an EJC destabilizing factor, preventing EJC accumulation at positions away from exon-exon junctions (non-canonical position).

Storage

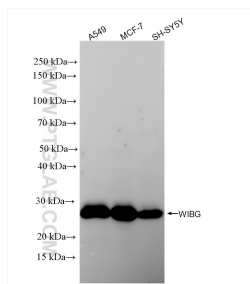
Storage:
Store at -20°C. Stable for one year after shipment.
Storage Buffer:
PBS with 0.02% sodium azide and 50% glycerol, pH7.3
Aliquoting is unnecessary for -20°C storage

*** 20ul sizes contain 0.1% BSA

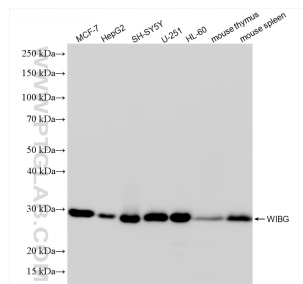
For technical support and original validation data for this product please contact:
T: 1 (888) 4PTGLAB (1-888-478-4522) (toll free in USA), or 1(312) 455-8498 (outside USA)
E: proteintech@ptglab.com
W: ptglab.com

This product is exclusively available under Proteintech Group brand and is not available to purchase from any other manufacturer.

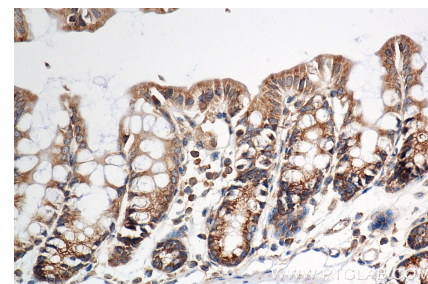
Selected Validation Data



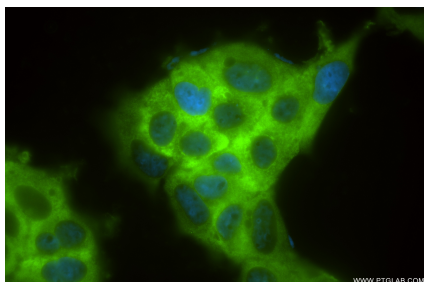
Various lysates were subjected to SDS PAGE followed by western blot with 86064-1-RR (WIBG antibody) at dilution of 1:3000 incubated at room temperature for 1.5 hours.



Various lysates were subjected to SDS PAGE followed by western blot with 86064-1-RR (WIBG antibody) at dilution of 1:3000 incubated at room temperature for 1.5 hours.



Immunohistochemical analysis of paraffin-embedded mouse colon tissue slide using 86064-1-RR (WIBG antibody) at dilution of 1:400 (under 40x lens). Heat mediated antigen retrieval with Tris-EDTA buffer (pH 9.0).



Immunofluorescent analysis of (-20°C Ethanol) fixed MCF-7 cells using WIBG antibody (86064-1-RR, Clone: 242800G10) at dilution of 1:400 and CoraLite®488-Conjugated Goat Anti-Rabbit IgG(H+L) (SA00013-2).