

For Research Use Only

LILRB2 Recombinant antibody, PBS Only (Capture)

Catalog Number: 86066-3-PBS



Basic Information

Catalog Number: 86066-3-PBS	GenBank Accession Number: NM_005874.4	Purification Method: Protein A purification
Size: 100ug , Concentration: 1 mg/ml by Nanodrop;	GeneID (NCBI): 10288	CloneNo.: 250299G8
Source: Rabbit	UNIPROT ID: Q8N423-1	
Isotype: IgG	Full Name: leukocyte immunoglobulin-like receptor, subfamily B (with TM and ITIM domains), member 2	
Immunogen Catalog Number: EG2839	Calculated MW: 65 kDa	

Applications

Tested Applications:
Sandwich ELISA, Indirect ELISA, Sample test

Species Specificity:
human

Product Information

86066-3-PBS targets LILRB2 as part of a matched antibody pair:

MP02254-2: 86066-3-PBS capture and 86066-2-PBS detection (validated in Sandwich ELISA)

Unconjugated rabbit recombinant monoclonal antibody in PBS only (BSA and azide free) storage buffer at a concentration of 1 mg/mL, ready for conjugation. Created using Proteintech's proprietary in-house recombinant technology. Recombinant production enables unrivalled batch-to-batch consistency, easy scale-up, and future security of supply.

This conjugation ready format makes antibodies ideal for use in many applications including: ELISAs, multiplex assays requiring matched pairs, mass cytometry, and multiplex imaging applications. Antibody use should be optimized by the end user for each application and assay.

Storage

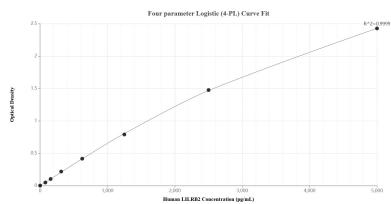
Storage:
Store at -80°C.

Storage Buffer:
PBS only, pH7.3

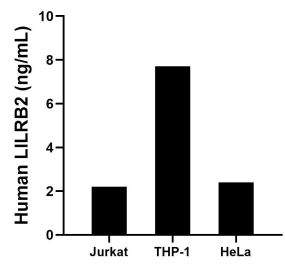
For technical support and original validation data for this product please contact:
T: 1 (888) 4PTGLAB (1-888-478-4522) (toll free in USA), or 1(312) 455-8498 (outside USA)
E: proteintech@ptglab.com
W: ptglab.com

This product is exclusively available under Proteintech Group brand and is not available to purchase from any other manufacturer.

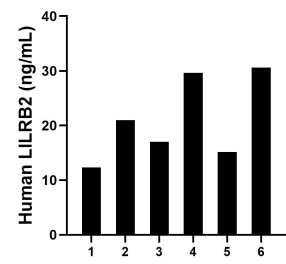
Selected Validation Data



Sandwich ELISA standard curve of MP02254-2, Human LILRB2 Recombinant Matched Antibody Pair - PBS only. 86066-3-PBS was coated to a plate as the capture antibody and incubated with serial dilutions of standard Eg2839. 86066-2-PBS was HRP conjugated as the detection antibody. Range: 78.1-5000 pg/mL.



The mean LILRB2 concentration was determined to be 2.2 ng/mL in Jurkat cell extract based on a 1.2 mg/mL extract load, 7.7 ng/mL in THP-1 cell extract based on a 3.4 mg/mL extract load and 2.4 ng/mL in HeLa cell extract based on a 1.4 mg/mL extract load.



Plasma of six individual healthy human donors was measured. The LILRB2 concentration of detected samples was determined to be 21.0 ng/mL with a range of 12.4-30.6 ng/mL.