

For Research Use Only

Serpin C1/Antithrombin III Recombinant monoclonal antibody, PBS Only (Detector)



Catalog Number: 86067-3-PBS

Basic Information

Catalog Number: 86067-3-PBS	GenBank Accession Number: NM_000488.4	Purification Method: Protein A purification
Size: 100ug , Concentration: 1 mg/ml by Nanodrop;	GeneID (NCBI): 462	CloneNo.: 250574C9
Source: Rabbit	UNIPROT ID: P01008	
Isotype: IgG	Full Name: serpin peptidase inhibitor, clade C (antithrombin), member 1	
Immunogen Catalog Number: EG3100	Calculated MW: 53 kDa	

Applications

Tested Applications:
Sandwich ELISA, Indirect ELISA

Species Specificity:
human

Product Information

86067-3-PBS targets Serpin C1/Antithrombin III as part of a matched antibody pair:

MP02252-2: 86067-2-PBS capture and 86067-3-PBS detection (validated in Sandwich ELISA)

Unconjugated rabbit recombinant monoclonal antibody in PBS only (BSA and azide free) storage buffer at a concentration of 1 mg/mL, ready for conjugation. Created using Proteintech's proprietary in-house recombinant technology. Recombinant production enables unrivalled batch-to-batch consistency, easy scale-up, and future security of supply.

This conjugation ready format makes antibodies ideal for use in many applications including: ELISAs, multiplex assays requiring matched pairs, mass cytometry, and multiplex imaging applications. Antibody use should be optimized by the end user for each application and assay.

Storage

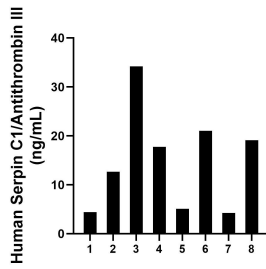
Storage:
Store at -80°C.

Storage Buffer:
PBS only, pH7.3

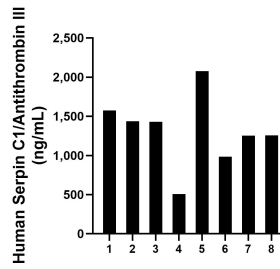
For technical support and original validation data for this product please contact:
T: 1 (888) 4PTGLAB (1-888-478-4522) (toll free in USA), or 1(312) 455-8498 (outside USA) E: proteintech@ptglab.com
W: ptglab.com

This product is exclusively available under Proteintech Group brand and is not available to purchase from any other manufacturer.

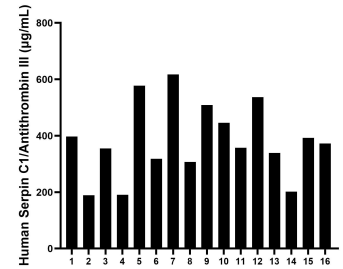
Selected Validation Data



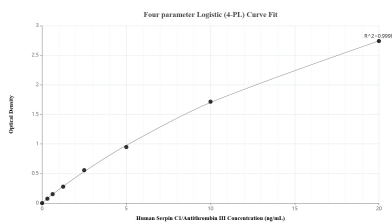
Urine of eight individual healthy human donors was measured. The Serpin C1/Antithrombin III concentration of detected samples was determined to be 14.82 ng/mL with a range of 4.28-34.20 ng/mL.



Human milk of eight individual healthy human donors was measured. The Serpin C1/Antithrombin III concentration of detected samples was determined to be 1,313.73 ng/mL with a range of 505.80-2,074.98 ng/mL.



Serum of sixteen individual healthy human donors was measured. The Serpin C1/Antithrombin III concentration of detected samples was determined to be 381.81 µg/mL with a range of 189.31-617.31 µg/mL.



Sandwich ELISA standard curve of MP02252-2, Human Serpin C1/Antithrombin III Recombinant Matched Antibody Pair - PBS only. 86067-2-PBS was coated to a plate as the capture antibody and incubated with serial dilutions of standard Eg3100. 86067-3-PBS was HRP conjugated as the detection antibody. Range: 0.313-20 ng/mL.