

For Research Use Only

# MAG/Siglec-4a Recombinant antibody

Catalog Number: 86073-2-RR



## Basic Information

Catalog Number: 86073-2-RR	GenBank Accession Number: NM_017190.4	Purification Method: Protein A purification
Size: 100ul , Concentration: 1000 µg/ml by Nanodrop;	GeneID (NCBI): 29409	CloneNo.: 250740G9
Source: Rabbit	UNIPROT ID: P07722-1	Recommended Dilutions: WB: 1:5000-1:50000 IHC: 1:500-1:2000
Isotype: IgG	Full Name: myelin-associated glycoprotein	
Immunogen Catalog Number: EG3251	Calculated MW: 69 kDa	
	Observed MW: 70-100 kDa	

## Applications

Tested Applications: WB, IHC, ELISA	Positive Controls:
Species Specificity: mouse, rat	WB : rat brain tissue, unboiled rat brain tissue, rat cerebellum tissue, mouse brain tissue, rat spinal cord tissue
<b>Note-IHC: suggested antigen retrieval with TE buffer pH 9.0; (*) Alternatively, antigen retrieval may be performed with citrate buffer pH 6.0</b>	IHC : rat brain tissue,

## Storage

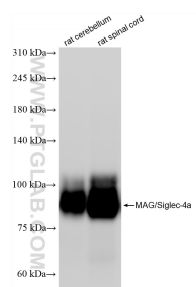
Storage:  
Store at -20°C. Stable for one year after shipment.  
Storage Buffer:  
PBS with 0.02% sodium azide and 50% glycerol, pH7.3  
Aliquoting is unnecessary for -20°C storage

\*\*\* 20ul sizes contain 0.1% BSA

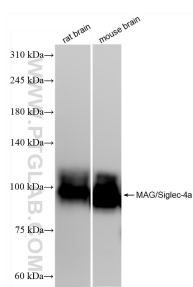
For technical support and original validation data for this product please contact:  
T: 1 (888) 4PTGLAB (1-888-478-4522) (toll free in USA), or 1(312) 455-8498 (outside USA)  
E: [proteintech@ptglab.com](mailto:proteintech@ptglab.com)  
W: [ptglab.com](http://ptglab.com)

This product is exclusively available under Proteintech Group brand and is not available to purchase from any other manufacturer.

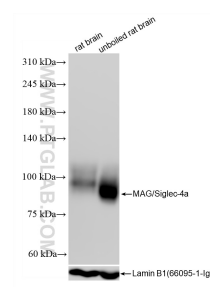
## Selected Validation Data



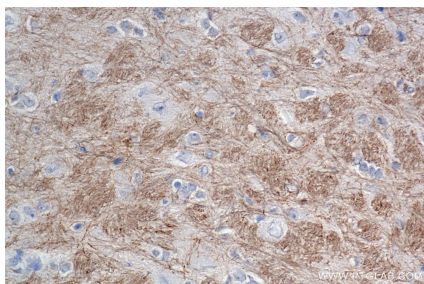
Various lysates were subjected to SDS PAGE followed by western blot with 86073-2-RR (MAG/Siglec-4a antibody) at dilution of 1:10000 incubated at room temperature for 1.5 hours.



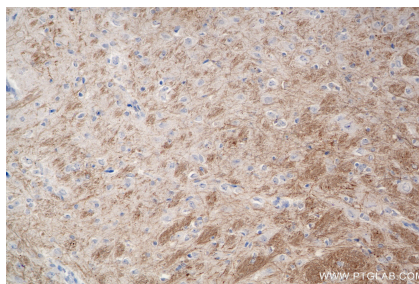
Various lysates were subjected to SDS PAGE followed by western blot with 86073-2-RR (MAG/Siglec-4a antibody) at dilution of 1:10000 incubated at room temperature for 1.5 hours.



Various lysates were subjected to SDS PAGE followed by western blot with 86073-2-RR (MAG/Siglec-4a antibody) at dilution of 1:10000 incubated at room temperature for 1.5 hours.



Immunohistochemical analysis of paraffin-embedded rat brain tissue slide using 86073-2-RR (MAG/Siglec-4a antibody) at dilution of 1:1000 (under 40x lens). Heat mediated antigen retrieval with Tris-EDTA buffer (pH 9.0).



Immunohistochemical analysis of paraffin-embedded rat brain tissue slide using 86073-2-RR (MAG/Siglec-4a antibody) at dilution of 1:1000 (under 20x lens). Heat mediated antigen retrieval with Tris-EDTA buffer (pH 9.0).